

INSIDE...

Celebrating
Our Members,
Both New and
Long-term!

constructionresource



2018



Excellence IN Construction AWARDS



PUBLISHED QUARTERLY BY



New Hampshire/
Vermont Chapter

VOLUME 27
ISSUE 4

*When it comes to
fire protection, go with
the largest in N.H.*



Hampshire

FIRE PROTECTION Co., LLC

ALL TYPES OF FIRE PROTECTION

FIRE SPRINKLERS • FIRE ALARMS

FOAM • FIRE EXTINGUISHERS

SALES • DESIGN • INSTALLATION • INSPECTIONS

**COMMERCIAL • INDUSTRIAL
SERVICE • REPAIR**



8 No. Wentworth Ave.
Londonderry, NH 03053
603.432.8221
603.434.3194 (f)

55 Harvey Road
Londonderry, NH 03053
603.432.8221
603.434.8128 (f)

104 Etna Road
Lebanon, NH 03766
603.448.5461
603.448.7334 (f)

277 Old Homestead Hwy
Swanzey, NH 03446
(603) 358-6736
(603) 358-6832 (f)

PO Box 53
Jackson, NH 03846
(603) 383-6888
(603) 383-6888 (f)



www.hampshirefire.com



**New Hampshire/
Vermont Chapter**

Associated Builders and Contractors, Inc. is a national non-profit organization whose mission is to represent the construction industry as a cohesive group of professionals, to serve as their vision and voice, and to pursue quality, common goals, and solutions to industry issues.

The NH/VT chapter is located at:
58 Chenell Drive, Concord, NH
603-226-4789
info@abcnhvt.org

Construction Resource is published quarterly by the NH/VT Chapter of Associated Builders and Contractors. Subscription rate is \$20 per year.

CHAIR

Wayne Symonds, Methuen Construction Co., Inc.

1ST VICE CHAIR

Joe Campbell, North Branch Construction, Inc.

2ND VICE CHAIR

Will Long, Interstate Electrical Services Corp.

TREASURER

Rusty Mosca, Nathan Wechsler & Co., CPA

DIRECTORS

Tim Barton, DECCO, Inc.
Sarah Crane, Andrews Construction Co., Inc.
Bill Hickey, The H.L. Turner Group Inc.
Robert Holden, Denron Plumbing & HVAC, LLC
Eric Horner, The Rowley Agency
Matt Johnson, Devine, Millimet & Branch
Jeff Luter, Fulcrum Associates, Inc.
Dan Smith, H.P. Cummings
Construction Company
Matt Wheaton, The MacMillin Company

PAST CHAIR

Mike Dion, Metro Walls, Inc.

NATIONAL DIRECTORS

Kelly Gagliuso, Gagliuso & Gagliuso, PA
Mark Hodsdon, Palmer & Sicard, Inc.

EX OFFICIO:

Jennifer Monkiewicz, USI Insurance,
ABC Group Trust Administrator
Jeff Comeau, Specialty Services of New England,
LLC, ABC Young Professionals Group (YPG), Chair

PRESIDENT & CEO

Joshua P. Reap, ABC NH/VT

**DIRECTOR OF EDUCATION
& WORKFORCE DEVELOPMENT**

Jennifer Landon, ABC NH/VT

DIRECTOR OF PROGRAM MANAGEMENT

Paulette Melanson, ABC NH/VT

MEMBERSHIP DIRECTOR

Shari Durazzano, ABC NH/VT

DESIGN/PRODUCTION

Susan G. Englert
Bradstreet Englert Creative
www.BECreativeSC.com

Table of Contents



FROM THE CHAIR

From the Chair 3



MEMBER NEWS

New Member Spotlight..... 6
News of Our Members.....23



AWARDS & DISTINCTIONS

2018 Excellence in
Construction Awards 7



PROFESSIONAL RESOURCES 20-21

ADVERTISER INDEX 40



Door Control, Inc.

Automatic Pedestrian Doors

Design Assistance • Installation • Service

Where Quality is Automatic

Pedestrian Automatic Door Systems

Sliding, Swinging, Bifolding, Revolving, Handicap
Accessibility Door Operators, All Glass Automatic
Door Systems, Automatic Sliding Fire Doors

Automatic/Manual Window Systems

High Security Drive-Up/Walk-Up
Fast Food Drive-Up
Pharmacy Drive-Up

Specialty Door Systems

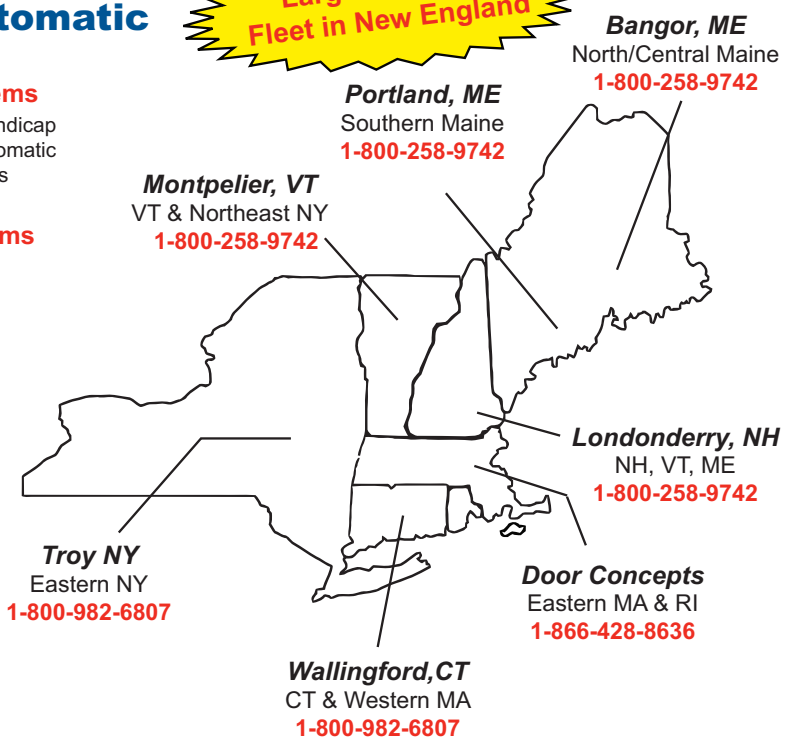
Manual & Security Revolving Doors
ICU/CCU Sliding Door Systems
Industrial Door Systems
Clean Room Door Systems
Stainless Steel/Muntz Clad Doors
Explosion Proof Door Systems
Fire Rated Slide Doors

Maintenance Services

24x7 Service Response
Call Service & Planned Maintenance
Parts & Service -- All Manufacturers

Other Services

Motion Detectors & Photo Electrics
Control Switches & Floor Mats
Manual Door Closers & Exit Devices
Electric Locking Devices
Card Access Systems



Specializing in:

- Hospital Entrances
- Handicap Doors
- Supermarkets
- Office Buildings
- Industrial Doors
- Shopping Malls



Full Compliance with
The Americans with
Disabilities Act



American Association of
Automatic Door Manufacturers



Certified Technicians

www.doorcontrolne.com

sales@doorcontrolne.com Tel: 1-800-258-9742 Fax: 1-800-594-8352



2018 Year in Review

Some say to move the needle is to make a significant difference. Our Chapter's members, its staff and leadership have done so over the course of 2018. Based on the merit shop philosophy, ABC helps members develop people, win work and deliver that work safely, ethically and profitably for the betterment of the communities in which they live and work in a free enterprise and merit shop environment. Our goals for this past year were centered around these precepts and support the needs of our fellow members.

In the area of workforce, building tomorrow's construction skilled labor force is both a local and national priority for ABC. This past summer, in the state of Vermont, our chapter, led by ABC's Director of Workforce Development and Educa-



tion, Jennifer Landon, facilitated certification of dozens of career and technical education providers to become certified to teach industry-recognized credentials that will prepare students to enter the workforce. This curriculum comes from the National Center for Construction Education & Research (NCCER). This programming is often used in merit shop apprenticeship program training yet is dynamic enough to be brought into the high school setting. As such, we have an extensive platform to prepare young adults who are eager to explore the exciting opportunities and careers being offered by

New Hampshire and Vermont's construction firms.

In Manchester, New Hampshire, we delivered a \$2,000 donation to kick start the Middle School at Parkside's new Careers in Construction Exploration Program. The proceeds come through the generosity of our ABC members and Young Professionals Group. At ABC, we see this is an investment in our community to create a better tomorrow. According to ABC research, over 500,000 construction jobs need to be filled across the country. This need led Manchester Board of School Committee member and local construction executive Jimmy Lehoux to push for the creation of the construction careers program at Parkside, and ABC is proud to be a supporter.

Preston Hunter from Eckman

Construction, working in collaboration with ABC, prepared a promotional piece setting forth the "why" of choosing a career in construction video which creates positive career imaging for our industry.

In December ABC NH/VT took on the advisor role under a subcontract with the BIA for the Construction Sector Partner Initiative (SPI). This group of experienced construction industry experts works with workforce development professionals, the education community, local economic development professionals and others to help highlight outstanding career opportunities in the sector. ABC engagement in this and the other workforce development efforts speaks volumes to how

CHAIR, TO PAGE 5

TURNER GROUP
advancing the technology, art, and science of the built environment



Holderness School Ice Rink



Methuen Construction Headquarters



Durgin Block Parking Garage



Concord City Wide Community Center

ARCHITECTURE

- BUILDING DESIGN
- FEASIBILITY ASSESSMENT
- CAPITAL IMPROVEMENT PLANS
- MASTER PLANNING

ENGINEERING

- STRUCTURAL
- CIVIL
- DAMS & HYDRO
- MECHANICAL / HVAC

BUILDING SCIENCE

- INDOOR AIR QUALITY
- COMMISSIONING
- BUILDING SYSTEM
- PERFORMANCE/EVALUATION

27 LOCKE ROAD | CONCORD, NH | 603/228-1122 | HLTURNER.COM

commercial • industrial • institutional • design/build • residential

STEEL FABRICATORS

Structural Steel, Metal Pan Stairs, Fire Escapes, Spiral Stairs, Interior & Exterior Railings in Steel, Aluminum, Stainless Steel, Bronze, or Specialty Cable Rails. We also custom fabricate a wide variety of miscellaneous steel components.

www.multi-weld.com

The Strength of Steel. The Quality of Multi-Weld. Since 1986

MULTI-WELD

MWS

services

INCORPORATED

Contoocook, New Hampshire




Give us a call! 603.746.4604



METRO Walls



SNHU TUCKERMAN HALL
COMPLETED 2013

We have the manpower and the experience

Metro Walls delivers high-quality work, on-time and on budget as a full service commercial framing and drywall company serving New Hampshire, Massachusetts, Maine and Vermont.

"Metro Walls has worked with us on several large projects. We are always very pleased with the work provided. In addition to their excellent craftsmanship, they can manage aggressive deadlines without skipping a beat. They are true professionals in the industry and we enjoy working with them."

JOE CAMPBELL, VICE PRESIDENT - NORTH BRANCH CONSTRUCTION

VISIT US AT WWW.METROWALLS.NET

Providing drywall and metal framing solutions from our two locations

New Hampshire
49 Hancock Street
Manchester, NH 03101
(603) 668-2542

Maine
23 Evergreen Drive
Portland, Maine 04103
(207) 887-9065




CHAIR, FROM PAGE 3

important the issue is to our industry.

Through member company contributions, ABC created and held a PAC event. ABC Staff and the Board put together a fundraiser on August 24th to support our chapter's participation in the political process in New Hampshire. This is in line with our strategic goal of developing relations with key House, Senate and executive leaders in the state. ABC PAC is to work within the NH State election process to further the goals of the association through direct involvement in supporting and opposing candidates for the Governor, Governor's Council, House and Senate. This is accomplished through educating our members on the importance of political activism and through financial support of merit shop candidates.

Our Free Enterprise Alliance commitment (FEA) helped to support a sponsored regional reception in Manhattan and the Chapter thereby committed \$10,000 for the education of ABC members, their employees, elected officials and the public about the issues important to free markets and open competition, or as we like to call it: The Merit Shop Way."

In the spring our chapter made a commitment to hire Sheehan Phinney to represent our association's interests in Concord and expand relations with government leaders in Montpelier. Reimbursement from CLRf (Construction Legal Rights Foundation) will help to fund this initiative. Doing so is in line with our political/legislative strategic goals and will allow the ABC to be more proactive with legislation moving into 2019.

In June Associated Build-

ers and Contractors of New Hampshire/Vermont welcomed Shari Durazzano, as the new chapter Membership Director. For nearly 15 years, Shari has led a successful career managing membership growth and retention in the association world. She has a wealth of experience in membership sales and management, which she brings to ABC. Shari has increased ABC's membership base, implemented innovative ways to incorporate more membership involvement, and outreach to current and prospective members to find ways to help them in the industry.

Two events were held in Vermont this year with a planned commitment of four events coming in 2019, which include a Vermont Member appreciation networking event in January at the Annual Planning Retreat in Woodstock, an annual Upper Valley Networking Event in Quechee, the Western Region FLic Graduation in Waterbury VT and a first ever "Meet the Generals" in Burlington later in 2019.

What's next? As you all know, Joe Campbell is currently the President of North Branch Construction and is our incoming ABC Chair for 2019. Both Ken, Joe and many others have grown North Branch to one of New England's most respected and widely recognized CM's and Design Builders. Giving back and paying it forward through ABC, the community and combined through a whole host of efforts is part of who Joe is. We are all confident that Joe through his leadership, the board and our staff will make a significant difference and move the needle in 2019!

Wayne Symonds

ABC NH/VT Chairman 2018

Customer Satisfaction

Quality Installations

Reliability



Serving New Hampshire, Maine & Massachusetts

603.742.0677

martineaelectric.com

INDUSTRIAL • OFFICE • HOTEL • COMMERCIAL



New Member Spotlight

Cline Design, LLC

46 S. MAIN STREET # 1
CONCORD, NH 03301
(603) 648-2110 LORRAINE CLINE
WWW.CLINEDESIGN.COM

CLINE DESIGN -- Measurable, Data-Driven Marketing for Contractors. We help commercial construction companies keep their pipeline filled by generating website traffic and delivering qualified leads through content creation, social media channels and search engine optimization.

Craig Hervey Housewright Construction, Inc.

5365 MAIN STREET S.
NEWBURY, VT 05051
(802) 866-5520 JODI OVENS
WWW.HOUSEWRIGHT.NET

Since 1985, Housewright Construction has built and restored custom dream homes in Vermont and New Hampshire. New Construction, Historic Restoration, Remodeling and Additions, Architectural Woodwork & Millwork

Granite State Glass

4 AVIATION DRIVE
GILFORD, NH 03249-6600
(603) 528-4748 PATRICK MARCOTTE
WWW.GRANITESTATEGLASS.COM

Granite State Glass has been serving the glass needs of New Hampshire, and New England. With seven locations in New Hampshire and one in Vermont, Granite State Glass is dedicated to serving their customer's needs in a safe, timely and professional manner. The Commercial Division of Granite State Glass can assist with CAD drawings, budgets or proposals on any size project. Our own fabrication facility allows us total control over fabrication and finishing of Granite State Glass designed systems from design to job site installation.

M&M American Builders of NH, LLC

377 HIGHLAND STREET
MANCHESTER, NH 03104
(603) 854-3005 JOHN MCGRATH
WWW.AMERICANBUILDERSNH.COM

At American Builders, our goal is to help you get the home of your dreams. Do you like traditional or modern design; maybe your taste is colonial or country; or perhaps Art Deco or contemporary? With our friendly contacts in the interior designs and architects world, we can help get you the perfect outcome for your home or small business. We pull it all together into a home or office design that is beautiful, functional and uniquely yours. M&M American Builders of NH supervises the entire project from start to finish.

Peniel Environmental Solutions, Inc.

778 ELM ST # C
MILFORD, NH 03055
(603) 801-6526 PETER HOEKSTRA
WWW.PENIELENV.COM

Peniel Environmental is the company that provides innovative, comprehensive and complete environmental solutions to homeowners as well as commercial property owners. We offer cutting edge technology and 24/7 rapid response services because we are deeply concerned about the importance of time in such urgent situations as floods, fires, inclement weather and traumatic events.

Longchamps
Electric Inc.

ELECTRICAL CONTRACTORS

"For large or small projects, our quality and expertise are unmatched."

- Experts at Design-Build
- Fire Alarm Installations
- Fast Track Projects
- Emergency Generators
- Control Wiring
- Computer Aided Design

700 Harvey Road, Manchester, NH 03103 • 603-625-5954

www.longchampselectric.com

Finely Crafted

HOUSEWRIGHT
CONSTRUCTION
INCORPORATED
EST. 1985

www.housewright.net

5365 Main Street
Newbury, Vermont 05051
P: 802-866-5520

2018

Excellence in Construction AWARDS

Chairman's Award

Excellence

**INSTITUTIONAL/PUBLIC,
\$5 MILLION TO \$10 MILLION**

EXCELLENCE AWARD

The MacMillin Company/DEW Construction

Name of Project: Dartmouth College - Moosilauke Ravine Lodge
Designer: Maclay Architects
Owner: Dartmouth College

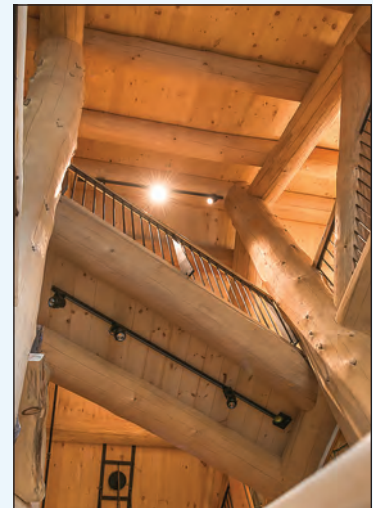
The Dartmouth College - Moosilauke Ravine Lodge has been home to the Dartmouth Outing Club and the rest of the Dartmouth Community for decades.

After many years of debate, the decision was made to tear down the original Lodge and replace it with something more modern, while preserving the history of the building and the memories that were created over the previous 77 years.

This project was an artistic endeavor from start to finish. The building's design incorporated a mixture of unique natural tree formations with modern touches. Much of the material that went into the building was organic and had been harvested locally. Whole timbers were used to build the frame and stone was used throughout the design, inside and out. Many of these rocks came from the existing site itself, and others were found in local New Hampshire quarries.

Following this incredibly artistic design was an overwhelming challenge at times. The design for the Lodge was a prototype, in the sense that nothing had really ever been built like this before on the east coast. It was not possible to completely and accurately design the project, when the team as a whole didn't actually know how the logs were going to come down and sit on each boulder, being that most of the boulders hadn't even been extracted from the ground yet. Each boulder, and log were a different size, so the way that they came together would be different as well. Which in turn, made the project especially hard to initially price during preconstruction, as it was basically a build and design project.

The logistical hurdles that were overcome as a team in order to make use of all of the organic material were significant and impressive and required an immense amount of planning during the pre-construction phase. The craftsmanship, skill and expertise required to successfully bring this impressive project to completion was outstanding, start to



finish. This project would not have been a success without the extraordinary team of construction professionals that came together to overcome some of the unique challenges that this project presented. In the end, the Moosilauke Ravine Lodge team designed and constructed an artistic marvel and something that is truly one of a kind in this part of the country.

MECHANICAL

MERIT AWARD

DECCO

Name of Project: Fitchburg Medical Marijuana Facility (FMMF)
Designer: Valliant Group
Owner: Revolutionary Growers Investment Group

This 300,000 sf of floor space for large scale cultivating of medical grade cannabis in a clean and closely controlled environment was originally constructed in a mid-1800's shoe factory.

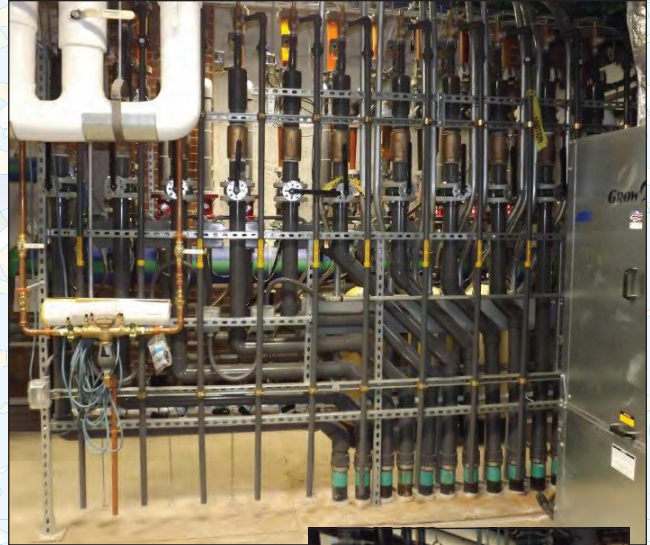
The first floor of the new facility utilized geothermal cooling from 24 wellheads to support the cooling of custom liquid cooled grow lights. Piping design, fabrication, and installation of a complete mechanical room piping package consisting of more conventional equipment such as plate and frame heat exchangers, centrifugal pumps, tanks, and cooling tower rooftop units. The remaining three floors of the factory are being developed by DECCO for cultivating recreational cannabis during the last half of 2018.

There are many challenges with installing modern equipment in a building with wood floors, ceilings and frame structure. Additional steel structures were installed to handle the distribution pumps and rooftop units. Bottom and side beam mounting systems, as well as spanned steel structures were added to support the distribution piping.

DECCO took a three-pronged approach to meeting the challenges associated with compressed build cycles including maximizing the utilization of apprentices, augmenting DECCO's trade staff with highly skilled contract labor and the "offsite" prefabrication of sub systems.

The Design - Build element required, once the full scope was recognized, was a new experience for DECCO.

The challenge to bring this project in safely, on budget and on



schedule pulled at every resource discipline imaginable from labor, material flow, coordination and quality. In the end, the success of the project was measured by the results and the results were outstanding.



Excellence

HISTORICAL RESTORATION

EXCELLENCE AWARD

EnviroVantage

Name of Project: Nobska Lighthouse Project
Designer:
Owner: United States Coast Guard

The Nobska Lighthouse, with a tower height of 40 feet from ground level or 87 feet above sea level, was constructed in 1828. The facility includes the Lighthouse tower, the keepers house, a garage, storage shed and oil house which are all still original 19th century construction.

The EnviroVantage pre-planning strategies had multiple highlights including the need to secure specialized pieces of equipment for the project. Taking into consideration the environmental conditions of the lighthouse's location, stabilization of the inside temperature against the outside weather elements was mandatory. EnviroVantage purchased digital heaters to heat and control the temperature inside the Lighthouse Tower.

One of the biggest challenges was that the historical value of the original construction materials was significant. With experience in this field, EnviroVantage set out to save, remove, refurbish, re-install and rejuvenate the original structure making it restoration, NOT replacement.

To protect the safety of the workers and the integrity of the work to be done, EnviroVantage chose to encapsulate the entire lighthouse.

To minimize sandblasting affects, EnviroVantage installed a second interior level of containment to provide additional protection.

Working with the Sherwin Williams paint expert EnviroVantage prepared and applied a specialized thicker than required paint. To



insure temperature stability, EnviroVantage purchased Caterpillar heat sensors to pump hot air into the Lighthouse so the paint would dry properly.

It is the EnviroVantage standard and the pride that drove the entire team to performance excellence on all aspects of The Nobska Lighthouse Project.



COMMERCIAL, UNDER \$2 MILLION

MERIT AWARD

Martineau Electric

Name of Project: Planet Fitness Corporate Headquarters, Hampton, NH
 Designer: TW Designs, Stibler Associates
 Owner: Planet Fitness, Inc.

When Planet Fitness, Inc. decided to move to Hampton, NH in 2017, the company expected to showcase a state-of-the-art Corporate World headquarters. The 70,000 square foot building would serve as the administrative center for 170 employees.

This facility is a cutting edge innovation center that fit into a larger initiative plan that would help Planet Fitness unveil a distinctive and contemporary corporate brand identity.

The Martineau Electric team began with a simple, yet impressive solution: create a sustainable design that was both efficient and intuitive. Every item used in the project was selected for its efficiency and sustainability. From LED lighting, and lighting control to the related mechanical systems, all of which provided energy efficiencies, increased air quality and resulted in cost savings for the overall infrastructure systems.

Throughout the entire project, design changes were made to original drawings to meet the needs of the customer which in turn created an increasingly demanding timeline to meet the schedule. By the eleventh hour, the project schedule had gone from bad to worse. Martineau Electric needed to reschedule generator power access to accommodate the updates. New procurements and delivery dates pushed the inspection appointment and generator power testing into mid-April. This left Martineau Electric with three weeks to finish lighting, power, fire alarm, distribution, HVAC, and all major systems, including one



commercial kitchen and a "state-of-the-art" corporate headquarters.

In the end, Planet Fitness praised Martineau Electric employees for their quality craftsmanship and steadfast professionalism.



COMMERCIAL, \$2 MILLION TO \$5 MILLION

MERIT AWARD

Fulcrum Associates

Name of Project: The Copper Door – Salem
 Designer: Stone River Architects
 Owner: Great New Hampshire Restaurants

The original goal of The Copper Door Restaurant was to create a space that provided high-end cuisine in a comfortable, casual environment.

Through a myriad of pre-planning and coordination between all trades, Fulcrum was able to direct the trades in tandem with the site superintendent to ensure everything would fit. This preplanning helped to eliminate many of the onsite variables that occur while construction is underway. Additionally, time was a constraint, and this meant working multiple trades in a very small space.

One of the largest obstacles involved installation of the acoustic sound panels. The installation itself was a challenge since fabrication took longer than expected, and work took place during the finishes phase of the project.

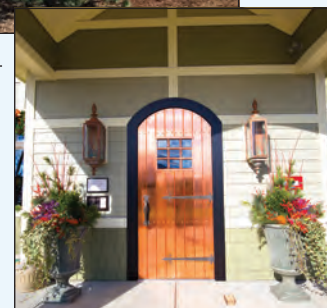
The Copper Door itself is the signature piece of the restaurant. Before the door could properly be protected, a strong gust of wind toppled a nearby ladder causing significant damage to the door. With the restaurant opening in only three days, Aubin Wood Working jumped in.

The craft artisan carefully removed each copper nail and replaced the panel the night before opening. This level of pre-planning ensured that the signature element of the restaurant was ready for its prime time debut.



Other ABC Members:

- Metro Walls, Inc.
- Oliver Mechanical, Inc.
- Page Street Leasing, LLC
- ProQuip Equipment Rental, Inc.
- ROI Staffing
- Tradesmen International
- Williams Scotsman, Inc.



COMMERCIAL, \$2 MILLION TO \$5 MILLION

MERIT AWARD

Turnstone Corporation

Name of Project: Contemporary Automotive
Designer: Warren Street Architects
Owner: David and Audrey Hammer

Contemporary Automotive has been in Milford, NH for over 30 years. An opportunity presented itself to relocate the dealership to another, more visible part of town.

The architect's design presented the building as a two story facility with a budget that exceeded the owner's pulse on the project. The Hammers, Warren Street Architects and Turnstone Corporation all collaborated at length discussing options and looking at where savings could be realized without compromising Chrysler requirements.

Ultimately, the building had to be completely re-designed to one story. This required relocation of the building on the site without impacting the wetlands. Avoidance of additional permitting with fees was a goal that was successfully met by this redesign.

The dealership is a new 25,000 sf facility that includes the sales floor, owner offices, sales and finance offices, administrative and accounting offices, break room, customer waiting area, children's play room, parts area, detail bays and service drive and bays. The parking areas, consisting of approximately 5 acres, house 450 vehicles and there are future plans for a Jeep Track on site.

This project represents the quintessential American Dream and is proof of local businesses and economies impacting a community positively.



Other ABC Members:

- Gate City Electric
- Hampshire Fire Protection Co., LLC
- J. Lawrence Hall
- Mas-Con
- Merrimack Building Supply
- Redimix Companies, Inc.
- TF Moran, Inc.
- Warren Street Architects



COMMERCIAL, \$2 MILLION TO \$5 MILLION

EXCELLENCE AWARD and BEST USE OF MEDIA

NorthPoint Construction Management

Name of Project: Avaloch Farm Music Institute
Designer: Maryann Thompson Architects
Owner: Avaloch Farm Music Institute

The Farm, for zoning reasons, needed to be one building and therefore while we actually have four separate buildings they are all connected by a covered walk.

Another challenge was the ability to serve both domestic water requirements for 34 residents as well as a fire protection system that requires a considerably higher volume of water. And we developed a community well system. We worked through Lewis Engineering and designed a water storage capacity of over 10,000 gallons. We have a central boiler plant. We have underground piping for hot water and chilled water, both domestic and hydronic heating for the entire facility.

For a music institute acoustical qualities are paramount. We had a number of challenges. We worked through some of these challenges with an acoustical engineer. And of all of the acoustical applications those 9 practice studios in the basement of the south wing were the most extensive with acoustical panels on the walls and treatments in the ceilings and the walls and gasketed doors. So when you close the door you are really hard pressed to hear much of anything.

We came up with a design that would control sound similar to that of the sound of rustling leaves.



COMMERCIAL, OVER \$10 MILLION

EXCELLENCE AWARD

PROCON

Name of Project: Homewood Suites by Hilton
Designer: PROCON
Owner: Lawrenceville LLC

At one time, this site was considered one of the worst contaminated soils in the nations. Now it is the location of a new hotel and event center. The Chelsea Homewood Suites stands as a shining example of an urban brownfields re-development in the face of almost overwhelming odds.

For over a decade the Environmental Protection Agency had done extensive analysis and removal of approximately 19,000 tons of PCB-impacted soils at the site. Consequently, when PROCON took on the design and construction of the hotel, their first mission was the remediation of the remaining contaminants before construction could begin.

PROCON's excavation layouts focused on an efficient soils evacuation process, a demarcation zone separating contaminated from clean soils and the personal safety of all those working in or visiting the site.

PROCON joined forces with a multi-agency taskforce in a vigorous soils abatement process. The excavation procedure was a meticulous one with each step carefully monitored and recorded by an onsite CDW Hygienist.

Concurrent with the project team's soils remediation process, the hotel brand and design was changed by the owner. So it was back to the drawing board for the PROCON architectural team as they worked to modify the original set of drawings for the new hotel design.



The Chelsea Homewood Suites was designed as a podium-style structure consisting of multiple stories of wood-framed structure on a reinforced concrete structural steel podium frame.

Other ABC Members:

- Denron Plumbing & HVAC, LLC
- Metro Walls, Inc.
- S.L. Chasse Welding & Fab., Inc.
- Williams Scotsman, Inc.



INSTITUTIONAL/PUBLIC, \$2 MILLION TO \$5 MILLION

MERIT AWARD

Fulcrum Associates

Name of Project: Northeast Delta Dental Stadium
Designer: Market Square Architects
Owner: City of Manchester

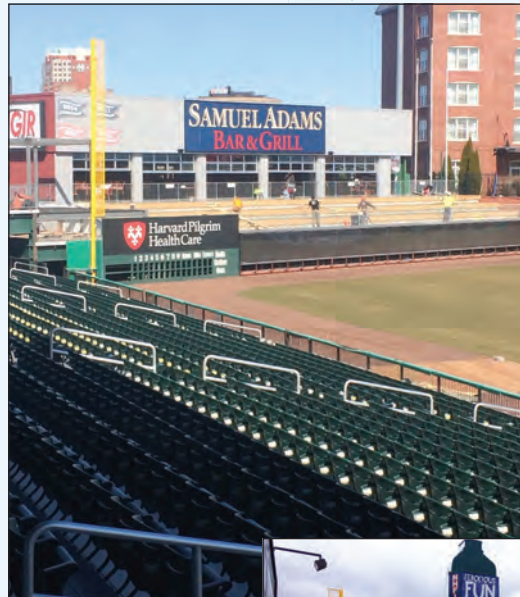
The start of the New Hampshire Fisher Cats 2017 season began with a focus on creating new, unique experiences for fans new and old alike. Improvements to the stadium were designed to encourage growth to the existing fan base, and possibly draw in new crowds as well.

The improvements to the stadium began with adding highlights to the entryway and beginning of the concourse area. Each person that enters the stadium from the main gates will now be immediately greeted by the all-new plaza: an illuminated rock structure, tiki bar and seating, as well as a 12-foot by 15-foot live stage.

Additionally, renovations were made to the Sam Adams Bar and Grill, with tiered swivel-chair seating and drink rails being added above left field. Structural improvements were made to the underside of the new tiered seating area.

Between back-to-back snow, sleet, freezing rain, and overbearing subzero wind chills, the overall project lost nearly two weeks in weather delays alone.

But at the end of the day, Fulcrum was able to overcome every hurdle that was presented. This project was an overwhelming success not only for the Fulcrum Team but for the stadium as well.



Other ABC Members:

- Associated Concrete Coatings
- Oliver Mechanical, Inc.
- ProQuip Equipment Rental, Inc.
- Raynor Door Authority
- S.L. Chasse Welding & Fab., Inc.



INSTITUTIONAL/PUBLIC, \$5 MILLION TO \$10 MILLION

MERIT AWARD

North Branch Construction

Name of Project: Dartmouth College Morton Hall Fire Reconstruction
Designer: Harriman Architects
Owner: Dartmouth College

In September 2016, Dartmouth College solicited proposals for the upcoming renovations of three dormitories. During the procurement process, with less than a week before proposals were due, a fire broke out in Morton Hall in the early morning hours of October 1, 2016.

Renovations to Morton Hall involved the building's interior, exterior, and all systems. The first floor atrium was removed, providing additional social and meeting space. Student rooms were configured in singles and doubles to support additional common space. Temperature controls were made available in every bedroom. An elevator was added in place of the former center stairwell.

The existing floor loads also weren't suitable for the proposed reconfiguration. USG Structural Panel Concrete Subflooring was installed. A custom-made, self-leveling cementitious underlayment was poured on top of the concrete subfloor that completely cured within 24 hours. Northeast Flooring installed the finish flooring within the building, completing every floor of the building within just three days each.

Installing an elevator required digging the elevator pit by hand because excavators couldn't fit inside the building.

The HVAC upgrades and the new air handling unit associated with them, required the addition of a standing-height mechanical room below the building, where at the time there only existed a crawl space.



Other ABC Members:

- EnviroVantage, Inc.*
- Hampshire Fire Protection Co., LLC*
- Longchamps Electric, Inc.*
- Multi-Weld Services, Inc.*



INSTITUTIONAL/PUBLIC, \$5 MILLION TO \$10 MILLION

MERIT AWARD

Structural Associates

Name of Project: Repair Building 177 - Portsmouth Naval Shipyard
Designer: McHenry Architecture
Owner: US Government

Constructed in 1942 in support of the WW II war efforts, Building 177 at the Portsmouth Naval Shipyard (PNSY), Kittery, ME was originally designed to store pipe and bar stock and the same purpose remains to this day.

Prior to renovation, building 177 was in disrepair with peeling lead based paint and holes through the exterior wood shiplap siding. The building interior was unheated and the work areas were not conducive to efficient handling of the stored material.

The purpose of the project was to upgrade both the facility and the material handling process of the facility to current standards to allow the Navy to work more efficiently.

Due to the most stringent quality control procedures used by the Navy, the pipe and bar stock cannot contact any foreign or dissimilar materials. To prevent the potential for contact or contamination, the storage bins were designed and equipped with government approved Mil-Spec inert isolation material to serve as a buffer between the stored material and the storage bins.

As the project progressed SAI was able to implement several changes, both unforeseen and Navy requested, without impacting the overall construction schedule.

The Building 177 project succeeded in this goal. The facility now operates as a state of the art material storage facility that efficiently and safely supports their mission of supplying material to the fleet.



Other ABC Members:

- EnviroVantage, Inc.*
- Hampshire Fire Protection Co., LLC*
- North & South Construction Services*
- Palmer & Sicard, Inc.*
- Raynor Door Authority of New England*
- RPF Environmental*



INSTITUTIONAL/PUBLIC, \$5 MILLION TO \$10 MILLION

EXCELLENCE AWARD

The MacMillin Company/DEW Construction

Name of Project: Dartmouth College - Moosilauke Ravine Lodge
 Designer: Maclay Architects
 Owner: Dartmouth College

The Dartmouth College - Moosilauke Ravine Lodge has been home to the Dartmouth Outing Club and the rest of the Dartmouth Community for decades.

After many years of debate, the decision was made to tear down the original Lodge and replace it with something more modern, while preserving the history of the building and the memories that were created over the previous 77 years.

This project was an artistic endeavor from start to finish. The building's design incorporated a mixture of unique natural tree formations with modern touches. Much of the material that went into the building was organic and had been harvested locally. Whole timbers were used to build the frame and stone was used throughout the design, inside and out. Many of these rocks came from the existing site itself, and others were found in local New Hampshire quarries.

The logistical hurdles that were overcome as a team in order to make use of all of the organic material were significant and impressive and required an immense amount of planning during the pre-construction phase. The craftsmanship, skill and expertise required to successfully bring this impressive project to completion was outstanding, start to finish. This project would not have been a success without the extraordinary team of construction professionals that came together to overcome some of the unique challenges that this project presented. In the end, the Moosilauke Ravine Lodge team designed and constructed



an artistic marvel and something that is truly one of a kind in this part of the country.

Other ABC Members:

Associated Concrete Coatings
 Housewright Construction, Inc.



INSTITUTIONAL/PUBLIC, OVER \$10 MILLION

MERIT AWARD

PROCON

Name of Project: Merrimack College - Crowe Hall
 Designer: PROCON
 Owner: Merrimack College

PROCON had partnered with the college since completing the Lawler Ice Rink in 2010. So, by 2016 when the college was ready to build their new academic building they turned to their longstanding design-build partner, PROCON.

The condensed 9-month schedule (most occurring during the colder winter months) affected every aspect of the project and required PROCON to take a whole different approach to the job. Along with the tight schedule were severely restricted work hours and no weekends, which meant PROCON was unable to pick up any additional time by scheduling after-hours work. The mid-project infrastructure work, with the same completion date, added another layer of difficulty to the team's existing workload.

The overhang that was designed as a visual interest worked in PROCON's favor allowing them to panelize the second and third floors earlier. This first-story stick framing technique was accomplished in just three weeks and was swiftly followed by an even faster panelization process of only five days. This was a significant achievement that bought much-needed time by getting to the weather tight phase quickly so interior construction could commence.

Crowe Hall features three floors of high-tech 50 and 80 person tired lecture rooms and classrooms, 28 faculty offices, conference rooms, a Financial Capability Center and the Comprehensive Business Advising Center.



Other ABC Members:

Denron Plumbing & HVAC, LLC
 Longchamps Electric, Inc.
 Metro Walls, Inc.
 Page Street Leasing, Inc.
 S.L. Chasse Welding & Fab., Inc.
 Specialty Services of New England, LLC
 SSW Erectors, LLC
 Stanley Elevator Co., Inc.
 Tocco Corporation
 United Rentals
 Wallboard Supply Company



DESIGN/BUILD

EXCELLENCE AWARD

PROCON

Name of Project: Brightview Senior Living - Wakefield
 Designer: PROCON
 Owner: Brightview Senior Living

Initially, Brightview acquired 5 separate parcels of land in the downtown area and commissioned longtime partner PROCON to design and build a comfortable yet functional community for its residents to call home.

There were six existing building within the building's footprint to be demolished before construction. Five of the buildings were outdated homes, and the sixth structure was a functioning rehabilitation facility in the process of relocation.

Brightview Wakefield was essentially a project in two major phases; 1) Extensive infrastructure work to the town's Main Street area and; 2) construction of a 4-story building onto an odd-shaped site. Plus, it was arguably one of the tightest sites in PROCON's company's history.

The project's location with existing overhead wires, mandated extensive electrical upgrades prior to any construction – requiring nothing less than an infrastructure makeover. Part of the overall electrical re-routing process involved the installation of a 30-ft underground electrical vault to house five transformers for carrying power to the buildings.

Another challenge was the town's main sewer line that ran directly through the project's footprint about 18 feet below grade and had to remain active throughout the construction process.

Solving all the issues of an extremely tight site required some "out of the box" thinking. For Brightview, the completed build fills a growing



national need for upscale senior accommodations, for an aging population seeking walkable urban environments, an amenity-rich community and vibrant living.

Other ABC Members:

Associated Concrete Coatings, Inc.
 HD Supply White Cap Construction

Celebrating a Job Well Done!



CHAIRMAN'S AWARD

Chairman's Award (above): The MacMillin Company/DEW Construction; Best Use of Media Award (right, top): NorthPoint Construction Management; Workforce Development Award (right, bottom): PROCON



BEST USE OF MEDIA AWARD



WORKFORCE DEVELOPMENT AWARD

*Who has the lowest workers' comp costs in
New Hampshire?*

**MEMBERS OF THE
ABC SELF-INSURED
GROUP TRUST**
for Workers' Compensation



Jennifer Monkiewicz, Vice President/Administrator
ABC Self-Insured Group Trust

We manage the risk...

- Regulated by the Department of Labor
- Audited by an independent accountant firm
- Allow in only the best of the best
- A-Rated reinsurance carrier caps group's losses
- Focus on loss prevention and claims management
- Monitor members to ensure strong performance
- Strong management by member board of directors

Take Control - Our Members Have...

- .85 Average Experience Modification
- 30% Average Five Year Loss Ratio
- \$2.6 million in cash back to our members for good performance in the last 4 years alone.
- Every member receives free loss control hours plus resources to maintain safety
- Consistency and Stability
- Aggressive Claims Management leading to 20% savings in claims costs



For more information, call 603-226-4789 or email info@abcnhvt.org

Think of us as your own personal Swiss accounting knife.

Nathan Wechsler & Company.
Because only the financially prepared survive.



Nathan Wechsler
Accountants & Business Advisors

70 Commercial Street, 4th Floor, Concord, NH 03301 603.224.5357

44 School Street, Lebanon, NH 03766 603.448.2650

www.nathanwechsler.com

+ MOVE IN. START WORKING. FOCUS ON YOUR GOALS.

When the building is just right, productivity is all you see. When you order space solutions from Williams Scotsman, you get much more than just the space. You get the building configuration, the furniture, the fixings and even the coffee maker. This total solution approach delivers an ease of doing business none of our competitors can match. We do what we do best, so you can concentrate on doing what you do best - working your project, being productive, meeting your goals.

Contact your local sales representative at 800-782-1500 or visit us at willscot.com

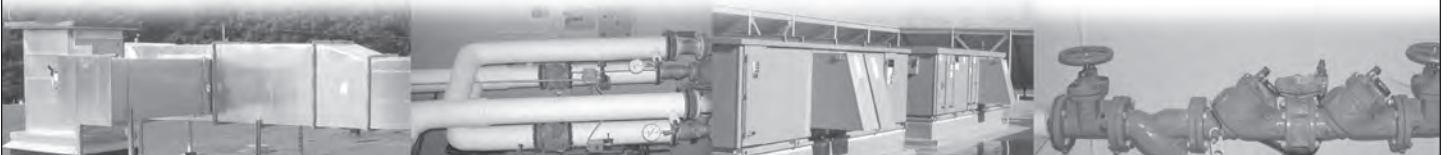


DUCTWORK

PIPING

HVAC

PLUMBING



Thinking prevention.
Delivering reliability.
Being cost-effective.

Since 1917.

Eckhardt & Johnson
MECHANICAL CONTRACTORS



SINCE 1917

6 Eastpoint Drive, Hooksett, NH 03106
603-622-7493
www.eckhardtjohnson.com

SERVICE

- Plumbing
- HVAC
- Service Agreements
- Maintenance Contracts

NEW CONSTRUCTION

- Hospitals
- Schools
- Office Buildings
- Manufacturing & Industrial Facilities
- Housing Projects
- Hotels
- Correctional Institutions

RENOVATION

- Boiler Replacement & Repairs
- Cooling Towers & Chillers
- Air Conditioning & Heating Equipment
- Process Piping
- Tenant Fit Up
- Turnkey Mechanical Systems
- Certified Medical Gas Installers
- Make Up Air Units

DESIGN/BUILD

- Plumbing
- HVAC
- Sheet Metal
- Process Piping

No dream is **too big.**

No idea is **too small.**

Service Credit Union is the perfect fit for your business.

We offer long-term, fixed-rate commercial real estate and construction loan options. By getting to know your business we can provide a package of services just right for your needs.

We offer the peace of mind of working with an organization built on a long history of responsibility, honor and member focus.

**Speak with a dedicated
Business Services Representative
today at 603.422.8439.**

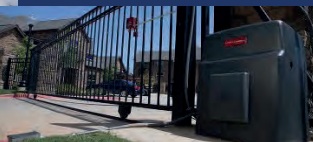
SERVICE[®]
CREDIT UNION
★★★★★





Contact us today!
1-888-229-3667

- Residential Garage Doors
- Commercial Garage Doors
- Specialty Products



Serving:
New Hampshire
Northeastern MA
Southern ME

www.raynordoorauthority.com

444 East Industrial Park Dr. Unit # 1 | Manchester, NH 03109

Established 1924
grappone
AUTOMOTIVE GROUP

Commercial sales
made **personal**.

We Deliver.

www.grapponeford.com
603.226.8189




We welcome

excellence in practice.

Bernstein Shur is proud to welcome preeminent construction law attorneys **Rick and Kelly Gagliuso** to our Manchester, New Hampshire office.

**BERN
STEIN
SHUR**

bernsteinshur.com/manchester



THE INFORMATION SOURCE FOR OWNERS · ARCHITECTS · CONSTRUCTION PROFESSIONALS

GENERAL CONTRACTORS

Bancroft Contracting Corporation
23 Phillips Road
South Paris, ME 04281
www.bancroftcontracting.com

Bonnette, Page & Stone Corp.
91 Bisson Avenue
Laconia, NH 03246
www.bpsnh.com

Carrigg Commercial Builders LLC
454 Sheffield Rd
Manchester, NH 03103
www.carrigg.com

Charters Brothers Construction, LLC
27 Main Street
Danville, NH 03819-3214
www.chartersbrothers.com

CIANBRO
PO Box 1000
Pittsfield, ME 04967
www.cianbro.com

CMGC Building Corp.
360 Harvey Road
Manchester, NH 03103
www.cmgcbuildingcorp.com

Cobb Hill Construction, Inc.
206 North State Street
Concord, NH 03301
www.cobhill.com

Construx, Inc.
630 Daniel Webster Highway #1
Plymouth, NH 03264
www.construxinc.com

Craig Hervey Housewright Constr., Inc.
5365 Main Street S.
Newbury, VT 05051
www.housewright.net

D. L. King & Associates, Inc.
27 Tanglewood Drive
Nashua, NH 03062
www.dlkingnh.com

DEW Construction
17 Elm Street
Keene, NH 03431
www.macmillin.com

Eckman Construction Co., Inc.
84 Palomino Lane
Bedford, NH 03110
eckmanconstruction.com

Estes & Gallup, Inc.
PO Box 240
Lyme, NH 03768
www.estes-gallup.com

Fulcrum Associates, Inc.
5 Tech Circle
Amherst, NH 03031
www.fulcrum-nh.com

Green Mountain Pipeline Services, Inc.
768 South Main St. # 1
Bethel, VT 05032
www.greenmountainpipe.com

H.P. Cummings Construction Company
PO Box 269
Woodsville, NH 03785
www.hpcummings.com

JBR Associates, LLC
10 Northern Blvd. #16
Amherst, NH 03031
www.jbrnh.com

LaMontagne Builders Inc.
317 South River Road
Bedford, NH 03110
www.lamontagnebuilders.com

Lewis Builders Development, Inc.
54 Sawyer Ave.
Atkinson, NH 03811
www.lewisbuilders.com

M&M American Builders of NH, LLC
377 Highland Street
Manchester, NH 03104
www.americanbuildersnh.com

Mark Carrier Construction, Inc.
175 Lincoln Street # 101
Manchester, NH 03103-5031
www.mcci-nh.com

Meridian Construction Corporation
32 Artisan Court # 4
Gilford, NH 03249
www.meridiannh.com

Methuen Construction Co., Inc.
144 Main Street PO Box 980
Pleistow, NH 03865
www.methuenconstruction.com

Morin Contracting Services, Inc.
711 Rivenwood Drive
Pembroke, NH 03275
www.morincontractingservices.com

North Branch Construction
76 Old Turnpike Road
Concord, NH 03301
www.northbranch.net

NorthPoint Construction Management, LLC
22 Hampshire Drive
Hudson, NH 03051-4922
www.northpointcm.com

PROCON
PO Box 4430 1359 Hooksett Rd.
Manchester, NH 03106
www.proconinc.com

R.M. Piper, Inc.
PO Box 490
Plymouth, NH 03264
www.rmpiper.com

Schroeder Construction Management, Inc.
2 Townsend West, Unit 3
Nashua, NH 03063
www.schroedercmi.com

SmartATI Construction
16 Whitehall Road # 2
Rochester, NH 03867
www.SmartATIConstruction.com

Structural Associates, Inc.
5903 Fisher Road
East Syracuse, NY 13057
www.structuralassociates.com

Sullivan Construction, Inc.
258 South River Road
Bedford, NH 03110
www.sullivanconstruction.com

TCD Construction, Inc.
91 Hancock Road
Peterborough, NH 03458
tcdbuild.com

Trumbull-Nelson Construction Co., Inc.
PO Box 1000
Hanover, NH 03755
www.T-N.com

Turnstone Corporation
479 Nashua Street
Milford, NH 03055
www.turnstonecorp.com

W.M. Schultz Construction
PO Box 2620 831 Rte 67, Curtis Ind. Park #28A
Ballston Spa, NY 12020
www.wmschultz.com

SPECIALTY CONTRACTORS

A. J. Cameron's Sod Farms Inc.
PO Box 536
Farmington, NH 03835
www.cameronsonsh.com

AA & D Masonry LLC
908 Hanover St. # 5
Manchester, NH 03104-5418

Accessibility Systems, Inc.
425 Washington St. - Ste. 108
Claremont, NH 03743
www.accessibilitysystems.com

Accurate Air, Inc.
140 Bouchard Street # 1
Manchester, NH 03103-3358
www.accurateairinc.com

Alpine Environmental, Inc.
275 Billerica Rd., Suite 2B
Chelmsford, MA 01824
www.alpine-environmental.com

Al Terry Plumbing & Heating, Inc.
1776 Hooksett Rd.
Hooksett, NH 03106-1689
www.atterryplumbing.com

All-Bright Systems, LLC
5 Brook Hollow Drive
Salem, NH 03079-1867
www.all-brightsystems.com

Alliance Mechanical, Inc.
PO Box 666
Essex Junction, VT 05453
www.amivt.com

All-Ways Accessible, Inc.
128 Hall Street # F
Concord, NH 03301
www.AWALifts.com

Alpine Environmental, Inc.
275 Billerica Rd., Suite 2B
Chelmsford, MA 01824
www.alpine-environmental.com

Amari Company, Inc.
11 Caldwell Drive #1
Amherst, NH 03031
www.amaricompany.com

American Steel & Precast Erectors
328 Sawmill Road PO Box 185
Greenfield, NH 03047
www.aspe-nh.com

Amherst Insulation & Firestop Service, Inc.
100 Carl Drive
Manchester, NH 03101

Andrews Construction Co., Inc.
PO Box 720
Campton, NH 03223
www.andrewsconst.com

ARC Mechanical Contractors
PO Box 724
Bradford, VT 05033
www.arcmech.com

Armand E. Lemire Co. Inc.
PO Box 16454
Hooksett, NH 03106
http://armandlemire.wpengine.com/

Associated Concrete Coatings, Inc.
476 Valley Street
Manchester, NH 03103
www.concoat.com

Bancroft Contracting Corporation
23 Phillips Road
South Paris, ME 04281
www.bancroftcontracting.com

Blaktop, Inc.
PO Box 5243
West Lebanon, NH 03784
www.blaktop.com

Blue Ribbon Companies: Fence, Landscaping,
Recr.
PO Box 16717
Hooksett, NH 03106
blueribbonnh.com

Bode Equipment Company
23 Londonderry Road # 12
Londonderry, NH 03053-3314
www.bodeequipment.com

Bonnette, Page & Stone Corp.
91 Bisson Avenue
Laconia, NH 03246
www.bpsnh.com

Bouchard Steel Erectors LLC
PO Box 760
North Bennington, VT 05257

Bow Plumbing & Heating Corp.
3 Bow Bog Road
Bow, NH 03304
www.bowph.com

Caprioli Painting, Inc.
20 Beech Street Extension # 3
Newmarket, NH 03857
www.capriolipainting.com

Chestnut & Cape, Inc.
30 North River Lake Road
Northwood, NH 03261
chestnutandcape.com

CIANBRO
PO Box 1000
Pittsfield, NH 04967
www.cianbro.com

Cole Electric, Inc.
205 Church Lane
East Thetford, VT 05043
www.coleelectric.com

Colonial Green Products Distributors, LLC
1032 NH Route 119 # 6
Rindge, NH 03461-6008
colonialgreenproducts.com

Construx, Inc.
630 Daniel Webster Highway #1
Plymouth, NH 03264
www.construxinc.com

Control Technologies
111 Zachary Rd.
Manchester, NH 03109-5609
www.controltechinc.com

Covenant Fire Protection, Inc.
62 West Brook Street
Manchester, NH 03101
www.covenantfirepro.com

Damon Insulation Co., Inc.
5 Tallwood Drive # C
Bow, NH 03304
www.damoninsulation.com

Daniels Electric Corporation
PO Box 7412
Gilford, NH 03247
danielselectriccorp.com

DECCO, Inc.
31 Route 13
Brookline, NH 03033
www.decco.com

Denron Plumbing & HVAC, LLC
605 Front Street
Manchester, NH 03102
www.denronph.com

Dependable Controls Services LLC
PO Box 307
Seabrook, NH 03874
www.dependablecontrolsservices.com

Deventry Construction/ Siding Specialists
716 Clough Mill Road
Pembroke, NH 03275
www.deventryconstruction.com

Door Control, Inc.
8 Delta Drive # D
Londonderry, NH 03053-2349
www.doorcontrolinc.com

Dowling Corporation
112 Heritage Ave.
Portsmouth, NH 03801
www.dowlingcorp.com

Eastern Vent Systems, Inc.
4 Dick Tracy Drive
Pelham, NH 03076
www.easternvent.com

Eckhardt & Johnson, Inc.
59 Londonderry Turnpike
Hooksett, NH 03106
www.eckhardtjohnson.com

EMCOR Services New England Mechanical
649 East Industrial Park Dr. # 11
Manchester, NH 03109
www.nemsi.com

EnviroVantage, Inc.
629 Calef Highway
Epping, NH 03042
www.envirovantage.com

Ewing Electrical Co., Inc.
PO Box 370
Deerfield, NH 03037

Executive Building Systems, Inc.
19 Star Drive Unit C
Merrimack, NH 03054
www.executivebuildingsystems.us

F. A. Gray, Inc.
300 West Rd. # 4
Portsmouth, NH 03801
fragray.com

F.H. Hamblet, LLC
29 Victoria St.
Keene, NH 03431
www.hambletelectric.com

Gate City Electric, LLC
PO Box 3554
Nashua, NH 03061
www.gatecityelectric.com

George W. Pynn Masonry
29 Newton Rd. - Rte. 108
Pleistow, NH 03865
www.pynnasonry.com

Godin Associates, Inc.
1721 Carl Broggi Highway
Lebanon, ME 04027

Gorman-Thomas, Inc.
20 Commerce Park North
Bedford, NH 03110
www.gormanthomas.com

Granite State Glass
4 Aviation Drive
Gilford, NH 03249-6600
www.granitestateglass.com

Granite State Plumbing & Heating, LLC
17 Oil Mill Road
Weare, NH 03281
www.gspinc.com

Hampshire Fire Protection Co. LLC
8 North Wentworth Ave.
Londonderry, NH 03053
www.hampshirefire.com

Harry-O Electrical Corporation
PO Box 7812
Loudon, NH 03301
www.harryoelectrical.com

Interstate Electrical Services Corporation
15 Cote Lane
Bedford, NH 03110
www.iesc1.com

Irish Electric Corp.
659 Currier Road
Hopkinton, NH 03229
www.irishelectric.net

J. Lawrence Hall Co., Inc.
17 Progress Ave.
Nashua, NH 03062
www.jlawrencehall.com

Jamco Excavators, LLC
84 Exeter Road
South Hampton, NH 03827
www.jamcoexcavators.com

Jasmor Properties LLC
721 Loudon Ridge Rd.
Loudon NH 03307
www.jasmorprop.com

Jeremy Hiltz Excavating, Inc.
PO Box 1142
Ashland, NH 03217
www.jeremyhiltzexcavatinginc.com

Johnson & Jordan, Inc.
320 Dover Road # 3L
Chichester, NH 03249
www.johnsonandjordan.net

Keeley Painting Co., Inc.
256 True Road
Pittsfield, NH 03263-3516
www.keeleypainting.com

Kindler Development Group, LLC
440 Hanover Street
Manchester, NH 03104
www.elmgrovecompanies.com

Knott's Land Care LLC
6 Manhattan Drive
Amherst, NH 03031
knottslandcare.com

Laconia Refrigeration
11 Walker St.
Laconia, NH 03246-2819
www.laconiarefrigeration.com

Lawrence & Lober Electric, Inc.
Bellows Falls, NH 05101
www.llelectricservices.com

Legacy Wall Systems, Inc.
94 River Road
Hudson, NH 03051-5241
www.legacywall.net

Leighton A. White, Inc.
138 Elm Street
Milford, NH 03055
www.leightonawhite.com

Longchamps Electric, Inc.
PO Box 4328, 700 Haney Rd
Manchester, NH 03108-4328
www.LongchampsElectric.com

Martineau Electric, Inc.
165 Industrial Park Drive
Dover, NH 03820
www.martineauelectric.com

Mas-Con Corporation
29 Center Street
Laconia, NH 03246
www.mas-concorp.com

McEntee Masonry Contractors, Inc.
169 Center Rd PO Box 337
Lyndenborough, NH 03082
mcenteemasonry.com

Merrimack Drywall, Inc./Merrimack Estimators,
Inc.
24 Putney Road
Dunbarton, NH 03046
www.merrimackdrywall.com

Metro Walls, Inc.
49 Hancock Street
Manchester, NH 03101
www.metrowalls.net

Multi-Weld Services, Inc.
153 Riverside Drive
Concord, NH 03229
www.multi-weld.com

New England Mechanical Overlay Inc.
100 Barnstead Road
Pittsfield, NH 03263
nemoinc.net

Noonan Brothers Painting, LLC
140 Bouchard St. # 1B
Manchester, NH 03103
www.noonanbrotherspainting.com

Norman E. Day, Inc.
116 Perimeter Rd. # E
Nashua, NH 03063
www.normaneday.com

North & South Construction Services
55 Calef Hwy. # 2
Barrington, NH 03825
www.northsouthnh.com

Northeast Safe-T Solutions, LLC
3 Commercial Lane Unit A
Londonderry, NH 03053
www.safetyfloors.com

Oliver Mechanical, Inc.
991 Candia Road Unit 1-3
Manchester, NH 03109-5209
www.olivermechanicalinc.com

Optiline Enterprises, LLC
157 Main Dunstable Road
Nashua, NH 03060
www.optiline.co

Overhead Door Company
210 West Road, Unit 4
Portsmouth, NH 03801-5639
www.overheaddoorcompany.com

Palmer & Sicard, Inc.
140 Epping Rd. # 102
Exeter, NH 03833-4555
www.palmerandsicard.com

Powers Generator Service LLC
PO Box 10005
Swanzy, NH 03446
www.powersgenerator.com

Premier Concrete Construction LLC
614 Gibbons Highway
Wilton, NH 03086
www.premierconcretellc.com

Raynor Door Authority of New England, Inc.
444 E Industrial Park #1
Manchester, NH 03109
www.raynordoorauthority.com

Reliance Steel, Inc.
94 South Oak Circle
Colchester, NH 05446
reliancesteelvt.com

Richard Electric, Inc.
PO Box 999
Wilder, VT 05088
www.richardelectric.com

Riess Construction LLC
11 Lovejoy Road
Plymouth, NH 03264
www.riessconstruction.com

Rockingham Interiors
7 Industrial Way # 3
Salem, NH 03079
www.rockinghaminteriors.com

Rose Steel Inc.
250 Ocean Road
Greenland, NH 03840
www.rosesteelinc.com

Royal Electric Co., Inc.
33 Central Street
Woodsville, NH 03785
www.royal-electric.biz

S.D.Szetela Masonry
PO Box 222
Glen, NH 03838
www.sdszetela.com

Sam Mechanical Services, LLC
1181 Hooksett Rd, 2nd Floor
Hooksett, NH 03106
www.sammechanical.com

Seacoast Scaffold & Equipment Corp.
243 Sheep Davis Rd.
Concord, NH 03301-8517
www.seacoastsccaffold.com

Secondwind Water Systems, Inc.
735 East Industrial Park Dr.
Manchester, NH 03109
www.secondwindwater.com

Signarama of Concord
249 Sheep Davis Road
Concord, NH 03301
www.signarama-concord.com

Simpson's Painting, Inc.
Box 976
Derry, NH 03038

SL Chasse Steel
8 Christine Drive
Hudson, NH 03051
www.slchassesteelfab.com

Solid Earth Technologies
3 Howe Drive, # 3
Amherst, NH 03031
www.solidearthtech.com

SSW Erectors, LLC
4808 Randolph Road
Morrisville, VT 05661
www.sswerectors.com

St. Pierre, Inc.
59 Jeffrey Road
Charlestown, NH 03603
www.stpierreincsandandgravel.com

Stanley Elevator Company, Inc.
PO Box 843
Nashua, NH 03061
www.stanleyelevator.com

Superior Fire Protection, Inc.
230 Londonderry Turnpike
Hooksett, NH 03106-1960
www.superiorfire.net

The RELCO Companies
14 Norfolk Ave
South Easton, MA 02375
www.gorelco.com

Tocco Building Systems
29 Cook Street
Billerica, MA 01821
www.toccoinc.com

V. R. Concrete, Inc.
PO Box 247
Colebrook, NH 03576
www.vrconcrete.com

Viking Roofing
10 Clinton Drive
Hollis, NH 03049
www.vikingroofingnh.com

W.M. Schultz Construction
PO Box 2620 831 Rte 67, Curtis Ind. Park #28A
Ballston Spa, NY 12020
www.wmschultz.com

White Diamond Painting, LLC
PO Box 594
Barrington, NH 03825
whitediamondpainting.com

Zampell
5 Stanley Tucker Drive
Newburyport, MA 01950
www.zampell.com

SUPPLIERS & ASSOCIATES

USI Insurance Services
3 Executive Park Dr. #300
Bedford, NH 03110
www.usi.biz

Albin, Randall & Bennett
PO Box 445
Portland, ME 04112-0445
www.arbcpa.com

American Aerial Equipment
45 Alice Agnew Drive
No. Attleboro Falls, MA 02763
www.americanarialequipment.com

American Steel & Precast Erectors
328 Sawmill Road, PO Box 185
Greenfield, NH 03047
www.aspe-nh.com

B.K. Systems, Inc.
27 Sheep Davis Road
Pembroke, NH 03275-3705
www.bkssystemsinc.com

Bernstein, Shur, Sawyer & Nelson
670 Commercial Street # 108
Manchester, NH 03101
bernsteinshur.com

Bode Equipment Company
23 Londonderry Road # 12
Londonderry, NH 03053-3314
www.bodeequipment.com

Bruce Ronayne Hamilton Architects Inc.
PO Box 104
New Ipswich, NH 03071-0104
www.brharch.com

Carroll Concrete Co. Inc.
PO Box 1000
Newport, NH 03773
www.carrollconcrete.com

Casella Resource Solutions, Inc
53 Pelham Road
Salem, NH 03079

CGI Business Solutions
171 Londonderry Tpk
Hooksett, NH 03106
cgibusinesssolutions.com

Charron, Inc.
PO Box 4550
Manchester, NH 03108
www.charroninc.com

Chasse Crane Services, LLC
8 Christine Drive
Hudson, NH 03051
www.slchassesteelfab.com

Cline Design, LLC
46 S. Main Street # 1
Concord, NH 03301
www.clinedesign.com

Cohen Steel Supply Inc.
10 Basin St
Concord, NH 03301
www.cohensteel.com

Consolidated Electrical Distributors, Inc.
79 Carl Drive
Manchester, NH 03103
www.cedmanchester.com

Construx, Inc.
630 Daniel Webster Highway #1
Plymouth, NH 03264
www.construxinc.com

Contractors Risk Management, Inc.
PO Box 211
Concord, NH 03302
www.crmusa.com

Control Technologies
111 Zachary Rd.
Manchester, NH 03109-5609
www.controltechinc.com

ConvenientMD Urgent Care Headquarters
111 NH Ave, Suite 2
Portsmouth, NH 03801
www.convenientmd.com

Cross Insurance Agency
1100 Elm Street
Manchester, NH 03101
www.crossagency.com

Cultural Chemistry, LLC
PO Box 266
Deerfield, NH 03037-0266
www.culturalchemistry.com

Devine, Millimet & Branch PA
111 Amherst Street
Manchester, NH 03101
www.devinemillimet.com

Door Control, Inc.
8 Delta Drive # D
Londonderry, NH 03053-2349
www.doorcontrolinc.com

Eastern Propane & Oil
PO Box 1800
Rochester, NH 03866-1800
www.eastern.com

Enterprise Fleet Management
10 2nd Avenue
Burlington, VT 01803-4408
www.enterprise.com/fleets

Everett J. Prescott, Inc.
PO Box 600
Gardiner, ME 04345
www.ejprescott.com

F.A. Gray, Inc.
300 West Rd. # 4
Portsmouth, NH 03801
fagrays.com

Gagliuso & Gagliuso, PA
BERNSTEIN SHUR 670 Commercial St #108
Manchester, NH 03101
bernsteinshur.com

Granite Financial Partners
388 Nashua St
Milford, NH 03055
gfpnh.com

Grappone Ford
PO Box 1200
Concord, NH 03302
www.grappone.com

GZA GeoEnvironmental, Inc.
5 Commerce Park North #201
Bedford, NH 03110-6984
www.gza.com

Hampshire Fire Protection Co. LLC
8 North Wentworth Ave.
Londonderry, NH 03053
www.hampshirefire.com

HD Supply - White Cap Construction & Industrial
232 Frontage Road
Manchester, NH 03103
www.whitecap.com

Hinckley Allen
650 Elm Street # 500
Manchester, NH 03101-2551
www.haslaw.com

Independent Electric Supply
177 Gay Street
Manchester, NH 03103
www.iesbuy.com

J. P. Pest Services
101 Emerson Rd.
Milford, NH 03055
www.jppestservices.com

Jeremy Hiltz Excavating, Inc.
PO Box 1142
Ashland, NH 03217
www.jeremyhiltzexcavatinginc.com

LaValley Building Supply, Inc.
Guild Road PO Box 267
Newport, NH 03773
www.lavalleys.com

Melanson Heath
121 River Front Drive
Manchester, NH 03102
melansonheath.com

Merrimack Building Supply, Inc.
PO Box 865
Merrimack, NH 03054
www.merrimackbuildingsupply.com

Nathan Wechsler & Co., CPA
70 Commercial Street #401
Concord, NH 03301-5031
www.nathanwechsler.com

New England Scaffolding & Services, LLC
85 Mill Street
Brockton, MA 02301
www.nescscaffolding.com

NorthEast Electrical Distributors
560 Oak St.
Brockton, MA 02301-1346
www.needco.com

Northern Design Precast, Inc.
PO Box 7305
Gifford, NH 03247-7305
www.ndprecast.com

Novel Iron Works, Inc.
250 Ocean Road PO Box 221
Greenland, NH 03840-2444
www.noveliron.com

Pac-Van, Inc.
505 West Main Street
Tilton, NH 03276
www.pacvan.com

Page Street Leasing, LLC
PO Box 129
Candia, NH 03034
www.pagest.com

Peniel Environmental Solutions, Inc.
778 Elm St # C
Milford, NH 03055
www.Penielenv.com

PeopleReady Skilled Trades
783 Route 3-A
Bow, NH 03304-3206
www.cip.com

Powers Generator Service LLC
PO Box 10005
Swanzy, NH 03446
www.powersgenerator.com

Preti Faherty LLC
PO Box 1318
Concord, NH 03301
www.preti.com

ProQuip Rentals & Sales, Inc.
509 Main Street
Gorham, NH 03581
www.proquipnh.com

Quirk Auto Dealerships
PO Box 5220
Manchester, NH 03108
www.quirkcommercial.com

RediMix Companies, Inc.
1 Sundial Avenue # 310
Manchester, NH 03103
www.redimixcompanies.com

Resource Options, Inc.
1 Verani Way # 1C
Londonderry, NH 03053
www.resourceoptions.com

Riess Construction LLC
11 Lovejoy Road
Plymouth, NH 03264
www.riessconstruction.com

RPF Environmental, Inc.
320 First NH Turnpike
Northwood, NH 03261
www.airfp.com

Russell Supply Corp.
PO Box 2221
South Burlington, VT 05403
www.russellsupply.com

Saymore Trophy Company
64 Old Suncook Road
Concord, NH 03301
www.saymoretrophy.com

Seacoast Scaffold & Equipment Corp.
243 Sheep Davis Rd.
Concord, NH 03301-8517
www.seacoastsccaffold.com

Service Credit Union
PO Box 1268
Portsmouth, NH 03802
www.servicecu.org

Signarama of Concord
249 Sheep Davis Road
Concord, NH 03301
www.signarama-concord.com

SL Chasse Steel
8 Christine Drive
Hudson, NH 03051
www.slchassesteelfab.com

St. Pierre, Inc.
59 Jeffrey Road
Charlestown, NH 03603
www.stpierreincsandandgravel.com

Stoneman, Chandler & Miller, LLP
99 High Street #1610
Boston, MA 02110
www.scmllp.com

Strang, Scott, Giroux & Young, LLP
228 Main Street PO Box 200
New London, NH 03257
www.strangscott.com

Superior Sheet Metal
14 Flagstone Drive
Hudson, NH 03051
www.superiorism.com

Team Engineering
80 Palomino Lane # 402
Bedford, NH 03110
www.engineerNH.com

Terracon
77 Sundial Ave. # 401W
Manchester, NH 03103
www.terracon.com

TFMoran, Inc.
48 Constitution Drive #2
Bedford, NH 03110
www.tfmoran.com

The Granite Group
6 Storrs Street
Concord, NH 03301
www.thegr granitegroup.com

The H. L. Turner Group, Inc.
27 Locke Road
Concord, NH 03301
www.hltturner.com

The Lawson Group
PO Box 3304
Concord, NH 03302
thelawsongroup.com

The Rowley Agency, Inc.
PO Box 511
Concord, NH 03302-0511
www.rowleyagency.com

Tradesmen International
169 So. River Rd #5
Bedford, NH 03110-6934
www.tradesmeninternational.com

TradeSource, Inc.
1461 Hooksett Road # A1
Hooksett, NH 03106
www.tradesource.com

Travelers
500 Southborough Dr #105
South Portland, ME 04106-6960
www.travelers.com

United Rentals, Inc.
2 Sutton Circle
Hooksett, NH 03106-2039
www.unitedrentals.com

USI - New England
3 Executive Park Dr. # 300
Bedford, NH 03110-6990
www.usi.biz

W. D. Matthews Machinery Company
309 Sheep Davis Road
Concord, NH 03301
www.wdmattthews.com

Wallboard Supply, Inc.
PO Box 184
Londonderry, NH 03053
www.wallboardsupplyco.com

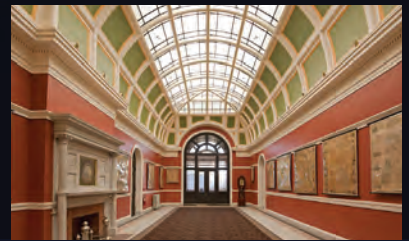
Warrenstreet Architects, Inc.
27 Warren St.
Concord, NH 03301
www.warrenstreetarchitects.com

Williams Scotsman, Inc.
48 Dick Tracy Drive
Pelham, NH 03076
www.willscot.com

Zampell
5 Stanley Tucker Drive
Newburyport, MA 01950
www.zampell.com



“From that first big team meeting in Meridian’s conference room, we knew we were in the right hands. You led us through a challenging redesign phase that helped bring the plans we brought you back into budget... But what made the project even more rewarding was the profound honesty and integrity of each member of the crew.” *-Building Owner*



residential / commercial



Construction Management, Design/Build and General Contracting

From the precision engineering of industrial-commercial buildings to the fine craftsmanship applied to architecturally distinctive homes, Meridian Construction builds stronger relationships with every day's work. Our clients engage with us as partners in assuring that their own vision of construction excellence is achieved.

Every project is deeply personal because honesty, goodwill and integrity are what matter most to our clients and us.

To inquire, please contact Tim Long, owner and president at (603) 527-0101.

www.MeridianNH.com



News of Our Members

■ **PROCON** of Manchester, NH was named as one of the “Best Companies to Work For” in the September, 2018 issue of Business NH Magazine. This was the second consecutive year

that the design-build firm was recognized as one of the Granite State’s best companies.

The company’s in-house family-styled culture sets it apart, and it starts at the top with

friendly CEO and Chairman Mark Stebbins, who knows every employee by name. Stebbins, his management and human resources team work hard to express employee appreciation, encourage an open door policy with management, listen to good ideas from their suggestions box, and promote the value of supporting their local community.

The company shares profits with its employees through random extra paychecks, and other perks include personalized employee thank-you gifts, annual bonuses, catered holiday lunches, ice cream socials, the annual Labor Day Breakfast with executives serving employees, a kudos wall for co-workers to thank each other, and national retailer discounts.

Families can get in on the fun with special days where spouses, children and even grandchildren are welcomed at PROCON events such as 5K races, rock-climbing, golfing and other family-styled activities.

In September 2018, Merrimack College opened the Dr. Alfred L. Arcidi Center - the latest addition to its growing campus. PROCON of Manchester, NH was the architect of record for the project. The 16,000 SF, 2-story building is located at 315 Turnpike St. in North Andover, MA. The Center opened in time for the 2017/18 academic year welcoming incoming freshman and the returning student body.



PROCON was named as one of the “Best Companies to Work For” in the September, 2018 issue of Business NH Magazine

MEMBER NEWS, TO PAGE 25

Amari Company, Inc.

**Commercial
Plumbing
Contractor**

**Serving
New Hampshire
& Massachusetts**



**Retail • Tenant Fit-ups • Restaurants
Water Piping • Gas**

(603) 882-4118



www.amaricompany.com
stephen@amaricompany.com

11 Caldwell Drive, Suite #1, Amherst, NH 03031



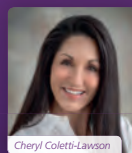
WORKERS' COMP

Your workers' comp is a highly controllable cost, you just have to expend the effort to control it!

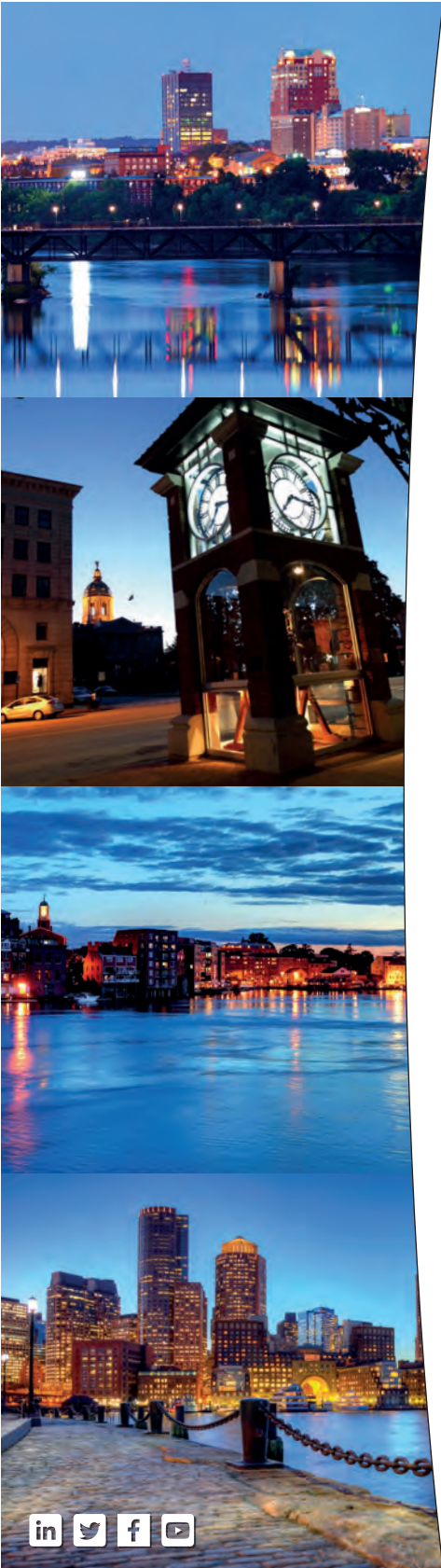
We manage self-insured companies and self-insurance groups that include over 350 NH employers!

Our service model is based on:

- Preventing claims from happening
- Denying claims that are not legitimate
- Managing claims to get people back to work



Learn more today! Contact us at **800.645.7674** or visit thelawsongroup.com



Devine Millimet's Construction Team has the technical training and industry experience necessary to represent clients on complex projects throughout New England and beyond.

How can we help you?

**DEVINE
MILLIMET**

ATTORNEYS AT LAW

MANCHESTER
CONCORD
PORTSMOUTH
BOSTON
603-669-1000
DevineMillimet.com

DevineMillimet.com/Construction



What you don't know can hurt you.



SAVE YOUR PROJECT
FROM THE HASSLES
OF FINDING THE
UNEXPECTED.

There's no time to waste.
RPF Environmental is a
full-service environmental
health and safety consulting
and testing provider that
responds with the most
cost-effective and quickest
turnaround in the industry.



RPF Environmental
RAPID RESPONSE. TRUSTED RESULTS.

Schedule a consultation today.
1-888-SAFE-AIR • Or visit www.airpf.com.

MEMBER NEWS, FROM PAGE 23

Named for the late Dr. Alfred L. Arcidi, class of '53, the Center houses admissions counselors for undergraduate and graduate students, creating a new gate-



Merrimack College's Dr. Alfred L. Arcidi Center

way to the campus that will be the first stop for thousands of potential students and parents.

The Center serves as a distinctive campus landmark with a striking glass front that houses the College's Visitor Center and the O'Brien Center for Student Success. This is PROCON's 11th collaboration with Merrimack College, whose recent projects include the North and South Residential Villages as well as the adjacent Crowe Hall that opened in 2017.

■ ABC members are known for their active involvement not only in business and industry, but also in community. The **ABC YOUNG PROFESSIONALS GROUP** is no exception. The ABC YPG steering committee, under the leadership of Chair, Jeff Comeau, has made community involvement a priority in 2018. Collectively, the group has sought opportunities to volunteer, to promote workforce development, and to raise charitable funds. The ABC YPs also seek community involvement opportunities as individuals, with one example being Nina Ann Timney, Treasurer, who is

participating in NHTI's 2019 Dancing with the Concord Stars, the school's largest fundraiser. On January 26, 2019, Nina, of member firm Nathan Wechsler & Company, and her dance partner, Dr. Doug Phelan of Concord Hospital, along with 10 other couples, will face off in a dance competition to raise funds for NHTI's President's Fund for Excellence, the school's largest scholarship fund which has awarded over 60 scholarships since 2010. ABC



Nina Ann Timney and her dance partner, Dr. Doug Phelan

and the ABC YPG are proud to have such an active and involved group of members. For more information, or to purchase tickets to Dancing with the Concord Stars, visit <https://www.nhti.edu/community-visitors/alumni-development/winter-fling-2019>.

The ABC YPG recently hosted its annual September Social at Manchester Country Club on September 13, 2018. While the September Social has remained a staple event for ABC YPG, this year brought something new. For the first time, ABC YPG awarded the 2018 Young Professional of the Year, drawing from a pool of exceptionally talented and qualified nominees. Cody Barnes, Assistant Project Manager at Methuen

MEMBER NEWS, TO PAGE 27



North Branch Construction

Construction Manager • Design-Builder • General Contractor

2018 ABC NH/VT GOLD SPONSOR



2018 ABC NH/VT Excellence in Construction Awards Merit Award
Dartmouth College
Morton Hall Fire Reconstruction

Concord, New Hampshire • (603) 224-3233 • www.northbranch.net





MEMBER NEWS, FROM PAGE 25



ABC Young Professionals Group
2018 Young Professional of the Year
Cody Barnes (right)

Construction, took home the honors before a large crowd of attendees. The ABC YPG Board would like to congratulate Cody and all the nominees for their accomplishments, and it would like to thank all those who attended the September Social.

Founded in 2012 as an initiative of ABC NH/VT, the ABC YPG's mission is to develop, empower, and connect young professionals through events in an effort to enhance their professional development and business success within the construction industry.

■ **TFMORAN** announced that Hannah Giovannucci, PE and Ryan Kaulbach, EIT have recently joined the Portsmouth division's civil engineering department.

Ms. Giovannucci is a licensed professional engineer in the states of New Hampshire and Massachusetts with over 6 years of engineering and management experience. Her experience includes the design and permitting of mixed-use, industrial, commercial, residential and redevelopment projects.

Ms. Giovannucci has a Bachelor of Science degree in Civil Engineering from the University of Massachusetts Amherst. She serves on the American Council of Engineering Companies Emerging Leaders Committee and volunteers for Habitat for Humanity. Ms. Giovannucci's prior work experience also includes transportation and traffic engineering in Boston, Massachusetts.

Mr. Kaulbach has a Bachelor of Science degree in Civil En-



H. Giovannucci



R. Kaulbach

gineering from the University of New Hampshire. In addition to designing sewer mains and drainage, his work experience includes permitting, project oversight, erosion control inspection and surveying. Previously, Mr. Kaulbach worked as an engineering technician for Public Works Departments for the cities of Keene and Brattleboro.

Dustin Sewall has also joined the civil engineering department serving as a Project Engineer. Mr. Sewall has a Bachelor of Science degree in Civil Engineering from the University of New Hampshire. His work experience



D. Sewall

MEMBER NEWS, TO PAGE 29

We Have On-Site Storage & Office Space Solutions For Your Next Project



Pac-Van has been providing portable storage and office space for over 25 years. With locations nationwide, including New Hampshire & Vermont, we can be your single source for on-site container and temporary office solutions. Contact us today at 603.729.3208 or visit us online at www.pacvan.com

Pac-Van
Formerly Tilton Trailer Corp.



Spotlight your project!

NH Business Review is giving contractors the opportunity to spotlight a recently completed project in a special two-page center spread called "From the Ground Up." This special feature gives visibility to the construction industry while showcasing some of the most interesting projects here in New Hampshire.

Each feature includes photos and article about the project, and advertising from the architects, engineers, and subcontractors who have been directly involved with the project.

For more information call 603-413-5154 or visit nhbr.com



FROM THE GROUND UP: The Prologis project
Dacon Corporation, TFMoran, others team up to create 614,000-square-foot distribution center near Manchester airport

Dacon Design-Build Build to Suit Solutions
Design / Build Services • CM@P Pricing
Construction Operations | Construction Services | Talent Management

DAICON
1000 Corporate Blvd., Suite 200, Manchester, NH 03102
603.413.5154 | www.dacon.com

CONTINENTAL PAVING, INC.
Landscaping • Turf • Sod
Crews • Maintenance

MIS Services
Specialized Cleaning & Restoration Professionals

FROM THE GROUND UP: The Prologis project
Dacon Corporation, TFMoran, others team up to create 614,000-square-foot distribution center near Manchester airport

UPS Northeast Logistics Center
- Londonderry, NH
- In-house services TFM provided:
- Civil Site Design & Planning
- Structural Engineering
- Traffic Engineering
- Stormwater Management
- Construction Inspection
- Land Servicing
- Landscape Architecture

Professional Services... Exceptional Results!

TFM
1000 Corporate Blvd., Suite 200, Manchester, NH 03102
603.413.5154 | www.tfm.com

Granite State
Painting & Heating, LLC
Mechanical Contractors
- Commercial
- Residential
- Multi-Phase
- Emergency

Service
- Ductwork
- Air Conditioning
- Heating
- Hot Water
- Heat Exchangers

PROJECT DETAILS
LOCATION: 52 PETERSHOLM ROAD, LONDONDERRY, NH
ISSUES: UPS, SES AND PRATT AND WHITNEY
DESIGNER: DAICON CORPORATION AND TFM
CONS. STRUCTURAL AND TRAFFIC ENGINEERING: TFMORAN
ISSUES: CONTINENTAL PAVING - CONTINENTAL PAVING CO.

NH BUSINESS REVIEW
REAL ESTATE & CONSTRUCTION NEWS ROUNDUP
MORE @ NHBR.COM

4 million U.S. homeowners are still underwater
While progress has been made, Zillow report finds stubborn problem remains

New Smuttynose facility wins regional energy-efficiency award
Hampton building cited for "outstanding innovation and commitment to sustainable energy practices"

Foundation placed for Bedford Whole Foods
40,000-square-foot store's shell expected to be completed by November

LGBT couples favor homeownership, fear discrimination
A powerful market with \$240 billion in buying power

7 deadly sins for design pros
Avoid legal complications by taking

NHBR newsletters
Subscribe to NHBR's news, browser and more
Your Email Address: _____

Stay connected with us
Jeff Fitzgerald
NHBR Editor
603.413.5118

No dream is too big. No idea is too small.
Service Credit Union has the mortgage you need for your business.
Lending Made Simple

More industry news
Homestead Whelan Mills sold for \$10k at Seabreeze Auction (The Maine Sentinel)
Price Rise plans to open its first Granite State grocery store... NH Union Leader

Sign up for NH Business Review's free Real Estate & Construction e-Newsletter

- Free weekly e-newsletter focusing on NH's real estate & construction industry
- Weekly roundup of stories from NHBR.com and statewide publications
- Emailed to more than 6,200 subscribers
- Advertising opportunities to reach a targeted audience

For all advertising opportunities, contact Kimberly Lencki at 603-413-5154



MEMBER NEWS, FROM PAGE 27

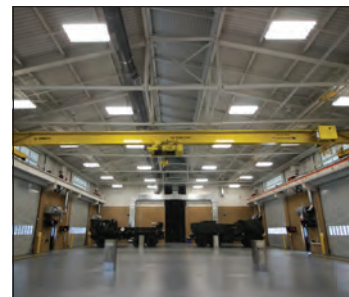
includes assisting in the design and preparation of commercial, industrial and residential site plans and permitting, storm-water management analyses, drainage and utility design and roadway design.

TURNSTONE CORPORATION is pleased to announce its latest partnership with the State of New Hampshire Division of Public Works. This “systems” project encompasses a smart, energy-conscious plan to include installation of a new heating system, with a fuel change from oil to propane; removal of an underground oil tank and installation of new underground propane tanks; conversion from electric to hot water heat in the newer wing; rerouting of gas lines; installation of heat pumps; a kitchen renovation: new windows in the original wing; and minor site work.

The project is scheduled to begin this month, with completion by Spring 2019. Readiness Center schedules and operations shall remain in place throughout the entire process. Turnstone is also still hard at work right across town on the new Milford Circuit Court / Division of Motor Vehicles building, which launched in March of this year. It is anticipated that the project will be complete by late winter of 2019.

NORTH BRANCH CONSTRUCTION was very busy this summer wrapping up two recently-completed, high profile projects located across from each other along Route 3 in Hooksett, NH.

The first – a new, \$10 million Field Maintenance Shop for the New Hampshire Army



New Hampshire Army National Guard's new Field Maintenance Shop

National Guard consisted of a 27,200-square-foot field maintenance building and a separate 2,435-square-foot metal storage building. The building, which includes a six-bay garage with overhead crane maintenance capabilities, a drive-through wash bay, a tool storage room, offices, classrooms, and gym and shower facilities. The scope of work also included major site improvements. This new facility, currently obtaining LEED certification, has combined the Manchester and Hillsborough field maintenance shops into one location to support the maintenance and repair of combat and tactical vehicles.

Less than a mile up the road from the Army National Guard facility, North Branch Construction completed an addition



Shooter's Outpost

to Shooter's Outpost, a retail facility offering a large selection of firearms, firearm accessories, ammunition, tactical apparel,

MEMBER NEWS, TO PAGE 31

Jeremy
HILTZ
EXCAVATING
INC.

Ashland, N.H.
968-9694



CONSTRUCTION



PeopleReady Speaks Construction

A partnership with PeopleReady allows you to get the skilled tradespeople you need, precisely when and where you need them. With our national team of local experts and decades of experience, we can create a custom workforce solution that fits your individual needs.

PeopleReady.com



NO JOB TOO BIG



...because we can cover them all.



THE ROWLEY AGENCY INC. 

INSURANCE • BONDS • BENEFITS

...an Assurex Global Partner
 1-800-238-3840
 www.rowleyagency.com

Serving New England Since 1966

Concord, NH
Portland, ME
Bennington, VT



MEMBER NEWS, FROM PAGE 29

safes, and more located within the iconic log cabin on Route 3. The over-14,000-square-foot, three-level structural steel addition with real log siding and corners, doubles the size of the existing building, featuring high-vaulted ceilings and exposed interior beams. The new space provides a new display area, increased retail space, a

café with commercial kitchen, employee offices, training space, new bathrooms, and inventory storage.

North Branch Construction of Concord has completed the renovation of the Blunt Alumni Center on the Dartmouth College campus. The 50,000-square-foot, renovation took place over a period of seven months on all four floors

of the building while the facility remained occupied throughout construction.

The Blunt Alumni Center is a mixed-use building at the heart of the Dartmouth campus that provides both

academic and administrative space to the college. Existing offices, seminar rooms, break-rooms, restrooms, and a kitchen all received renovations. North Branch Construction also added structural upgrades for a future canopy was added at the Garden level exit to cover the existing exterior exit stairs. Renovations included an air conditioning system, a ducted HRU ventilation system, new lighting, lighting controls and power distribution, new tele-data infrastructure, fire alarm modifications, new windows, and new finishes. The entire exterior was painted.

This project reconfigured the existing layout of the building to provide four new seminar rooms, a new classroom with a state-of-the-art A/V system, and five new and reconfigured ADA compliant restrooms.

North Branch Construction and Dartmouth College coordinated extensively to schedule alumni and reunion events at this high visibility project along with ongoing construction.

North Branch Construction of Concord has completed construction of the new Liquor & Wine Outlet at the Portsmouth Traffic Circle for the New Hampshire Liquor Commission (NHLC). The new store is located at the Portsmouth Traffic Circle, right next to the existing liquor store located on the same site. The existing outlet remained in full operation throughout construction.

The new 23,000-square-foot, state-of-the-art outlet nearly doubles the size of the existing store it has replaced. The building design incorpo-



Blunt Alumni Center, Dartmouth College

MEMBER NEWS, TO PAGE 33



Granite State

Plumbing & Heating, LLC

A division of



Toll Free (866) 540-1542
Phone (603) 529-3322
Service (603) 529-3331

www.gsphinc.com

Mechanical Contractors

- Commercial
- Industrial
- Institutional
- Multi-Family
- Design/Build



Service Department

- Refrigeration
- Heating/AC
- Medical Gas
- Plumbing
- 24-Hour Service
- PM Contracts



Voted
Best of Business
EIGHT YEARS in a row!

Recent & Current Projects

- Great Glen Hotel ♦ Greens Grant, NH
- WMUR-TV Renovations ♦ Manchester, NH
- Coastal Specialty Forest Products ♦ Bow, NH
- Plymouth State University PE Center ♦ Plymouth, NH
- Catholic Medical Center Phase 1 & 2 ♦ Manchester, NH
- Plymouth State University Geneva Smith Hall ♦ Plymouth, NH

Proudly
Serving the
New Hampshire
Construction
Community
Since 1983



2018 ABC Premier Sponsors

Platinum Sponsors



EnviroVantage
 ASBESTOS ABATEMENT. REMEDIATION. DEMOLITION. .com
 www.EnviroVantage.com • 800-640-5323 • info@envirovantage.com
 Locations in New Hampshire, Massachusetts and Maine

METRO Walls



CROSS
 INSURANCE
 WHERE SECURITY MEETS STRENGTH

THE ROWLEY AGENCY INC.
 INSURANCE • BONDS • BENEFITS
 ...an Assurex Global Partner



Nathan Wechsler
 Accountants & Business Advisors

Gold Sponsors



ABC
 New Hampshire
 Self Insurance Group
 TAKING CHARGE OF WORKERS' COMPENSATION

NB North Branch
 Construction



Fulcrum

DEVINE
 MILLIMET

ATTORNEYS AT LAW

M MERIDIAN
 construction

SERVICE[®]
 CREDIT UNION




MCMethuen
 CONSTRUCTION



MEMBER NEWS, FROM PAGE 31

rates the new NHLC branding aesthetic, featuring a post and beam clerestory over the sales floor and accent trusses on the

sturdy structure that would be able to allow personnel the access they needed. This catwalk structure was also fitted with a stairway system that would



NH Liquor Commission's Outlet Store featured post and beam clerestory over the sales floor.

exterior of the building.

North Branch Construction faced notable challenges on this project. The new store's location falls in very close proximity to the previous liquor store, with portions of the construction site less than 6' away from the existing building.

Demolition of the old store is nearing completion, with a new parking lot to follow. Providing design for this project is local architectural firm Oak Point Associates.

allow access to and from the platform.

The uncommon aspect of this specific install was the closed-end of the catwalk. Platforms such as these usually offer connection between two elevated areas, but in this case only one elevated area needed the access path. Thus, the stairway was installed in order to allow the second access point of the catwalk to be on the ground level.



Solutions such as these are highly customizable and able to fit into many different applications. Bode provides the know-how and experience dealing with these work platform applications, while Wildeck provides its years of experience and quality products in order to provide the client with the best solution for their application.

■ BODE EQUIPMENT COMPANY.

An alcohol distributor in Medford, Massachusetts needed to access its second level modular offices, as well as a way for personnel to safely access equipment on the ground floor without walking in front of high-speed doors that have constant forklift traffic.

They required a solution that ultimately increased safety for personnel as well as efficient access of offices and equipment in a specific area of the facility.

Luckily, Bode was able to provide the perfect solution for the facility. A custom Wildeck platform was installed in order to provide the facility with a

SLCHASSESTEEL



STRUCTURAL STEEL
MISCELLANEOUS METALS
FABRICATION
ERECTION



8 CHRISTINE DRIVE, HUDSON, NH 03051
PH: (603) 886-3436 • FAX: (603) 881-9953

QUALITY WORKMANSHIP AND EXPERIENCE
 COMPETITIVE PRICE
 IN-HOUSE DETAILING STAFF
 UTILIZING SDS/2 SOFTWARE




WWW.SLCHASSESTEELFAB.COM
EMAIL: INFO@SLCHASSESTEELFAB.COM

PROUD MEMBERS OF:






When it comes to looking out for your best interests, you can count on Cross for prompt, professional service.

By selecting policies from only the top carriers, our experienced insurance professionals can find the right coverage for you.



Infantine Insurance
A Division of Cross Insurance



Infantine Insurance:
Cross Insurance:

203 Meetinghouse Rd. Bedford
155 Court St. Laconia
110 Elm St. Manchester

603-669-0704
603-524-2425
603-669-3218

Contact us for all your Insurance and Surety Bonding Needs!

CROSSAGENCY.COM

Official Insurance Broker:





To the Associated Builders & Contractors NH/VT Chapter Membership:

The **ABC Young Professionals Group (YPG)** has had a tremendous year in 2018. We set lofty goals for the group and, in the end, we exceeded all of our own expectations. Our twelve-member Steering Committee stepped up and gave it their all to make this one of the most successful and productive years since the ABC YPG's inception in 2012. I have been blessed to have such an energetic, determined, committed, and resourceful group.

Here are some highlights and milestones from 2018:

- Hosted 5 networking events, including our Party in the Park, co-sponsored by Concord YPN, which garnered over 150 people in attendance;
- Introduced, developed, and executed two of our very first educational seminars;
- Started the YPG Scholarship Fund (funded by 100% of educational seminar proceeds);
- Raised \$1,500 for the Parkside Middle School Pilot Program;
- Raised \$4,500 in cash and \$500 worth of donations for Families in Transition-New Horizons at our annual Charity Bowling Tournament;
- Developed the framework for, and presented, our First Annual Young Professional of the Year Award (awarded to Cody Barnes from Methuen Construction);
- Developed the YPG Ambassador Program for implementation in 2019.



The ABC NH/VT staff have been an invaluable resource. Thank you so much to Josh, Paulette, Jennifer and Shari for their continuing support. In 2018, we had seven ABC companies support and underwrite the YPG as annual Platinum Sponsors. Without their support, we would not have been able to be as effective as we were. We are very lucky to have a supportive membership. If your company would like to sponsor the ABC YPG for 2019, or if you have any questions about sponsorship details, please email chairman@abcypg.org.

Thank you once again to the ABC YPG, the ABC NH/VT staff, our Platinum Sponsors, and to all of the ABC companies and their employees who have attended and sponsored our events. 2018 has been amazing and I cannot wait to see what we achieve in 2019.


 Jeff Comeau, Chair
 ABC YPG Board of Directors

www.abcypg.org

 THANK YOU TO OUR 2018 PLATINUM SPONSORS



SIGNARAMA

WHERE THE WORLD GOES FOR SIGNS

DIMENSIONAL LETTERS / LOGOS

Using stock materials such as Acrylic, PVC and HDU we can produce dimensional letters and logos that will give your business a professional look. We can add letters to a flat sign for a "3D" appearance or LED lights to the back for a "halo" effect.



CHANNEL LETTERS

We are a premier manufacturer of interior and exterior channel letters. Our streamlined and lean manufacturing processes allow us to produce projects of any size. From technical drawings to installation of 1 set or 500, we are the right source.

CARVED SIGNS/BLANKS

Our CNC Router allows us to manufacture visually effective signs that will work hard and bring in more clients. We can supply with a painted finish or as blanks wholesale to the sign industry.



SIGN CABINETS

We design and manufacture our cabinets with quality materials for applications ranging from monument style to roof mount. We offer custom shapes as well.

CNC SERVICES

Our CNC 3 Axis Router allows us to service many industries outside the sign industry. If you have a need for competitive, high quality routed piece parts in Acrylic, PVC, Wood or Lighter Gauge Aluminum, we are the place to go.



SERVICE/INSTALL

Our dedicated service and installation team is on the road and in the air everyday. We can ensure your lit and non lit signs look good and perform properly. Our service contracts reduce costs on parts and labor.

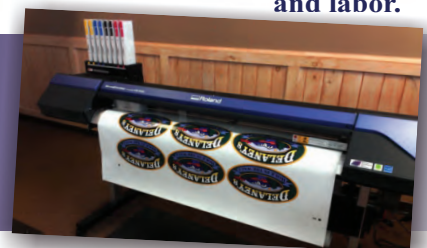
LARGE FORMAT PRINTING

Vinyl Applications:

- Indoor Banners
- Outdoor Banners
- Window Displays
- Poster and Photo Prints

- Lightbox Signs
- Custom Wall Murals
- Metal Signs
- Yard Signs

- Trade Show Displays
- Vehicle Graphics
- Vehicle Magnets
- Foam Boards



603-225-4081 • signs@signarama-concord.com



Celebrate Our Members

ABC NH/VT CHAPTER June-December Member Anniversaries

40+
years

30+
years

20+
years

Simpson's Painting, Inc.	28
Fulcrum Associates, Inc.	25
Mas-Con Corporation	24
Longchamps Electric, Inc.	24
Ewing Electrical Co., Inc.	23
Contractors Risk Management, Inc.	23
All-Bright Systems, LLC.	22
TradeSource, Inc.	20
SL Chasse Steel.	20

J. Lawrence Hall Co., Inc.	46
---------------------------------	----

Novel Iron Works, Inc.	38
Palmer & Sicard, Inc.	33
American Steel & Precast Erectors	33
St. Pierre, Inc.	33

15+
years

Norman E. Day, Inc.	19
Morin Contracting Services, Inc.	19
Interstate Electrical Services Corporation	18
Keeley Painting Co., Inc.	18
EnviroVantage, Inc.	18
PeopleReady Skilled Trades	18
Oliver Mechanical, Inc.	17
Everett J. Prescott, Inc.	17
Estes & Gallup, Inc.	16
Andrews Construction Co., Inc.	16
Granite State Plumbing & Heating, LLC.	15
Superior Sheet Metal	15
Damon Insulation Co., Inc.	15
Albin, Randall & Bennett	15
Charron, Inc.	15
Quirk Auto Dealerships.	15
Armand E. Lemire Co. Inc.	15

SPECIALISTS IN:

- Computer Rooms
- Air Make-up Systems
- Industrial Humidification
- Steam and Hot Water Boiler Systems
- Plumbing
- Precision Temperature Control Systems
- Chilled Water Process Systems Engineering
- Energy Management Systems
- Maintenance Programs

www.jlawrencehall.com

17 Progress Ave., Nashua, NH 03062
Phone: (603) 882-2021 • Fax: (603) 882-1287





ABC Chapter Ad

STEP CHANGE YOUR SAFETY PERSPECTIVE

What can we learn from more than a billion hours of work? How to achieve world-class safety. ABC analyzed the incident rates of members who participated in the 2017 Safety Training Evaluation Process and found that STEP can help the best-performing contractors achieve remarkable safety performance—more than six times safer than the industry average.* That's what we call world-class safety.

Our members can speak to the power of STEP and its impact on creating a culture of safety that believes every incident is preventable.

LEARN MORE TODAY AT ABC.ORG/STEP.

**ABC 2018 Safety Performance Report, abc.org/spr*



METAL BUILDINGS

- **Designed**
- **Supplied**
- **Erected**

30
Years of
Service

New England's Award Winning
Metal Building Expert since 1987

CONSTRUX, INC.

www.construxinc.com

Protecting your relationships.

In the design and construction industry, there is no better way to protect your relationships than by using AIA Contract Documents. As the Industry Standard for over 120 years, our pre-drafted agreements and forms define the relationships and terms involved in your project, ensuring all parties are aware of expectations. Developed with input from key stakeholders, and recognized by courts across the country, AIA Contract Documents protect your project from start to finish.

Learn More at www.aia.org/contractdocs

Paper documents are still available from AIANH, 606-357-2863, www.aianh.org



WE'RE YOUR FIRST CHOICE IN DISASTER RESTORATION

Innovative Environmental Solutions for
Homeowners and Commercial Property Managers
Across New Hampshire, Massachusetts and Maine

24/7 Hot Line: 877.708.6196

PENIEL ENVIRONMENTAL
778 Elm Street, Suite C, Milford, NH 03055
PenielEnv.com

Mold Remediation

Asbestos Removal


Oil Tank Removal

Site Remediation

Crime Scene Cleanup

Fire and Smoke Mitigation

Water Mitigation





Design it. Plan it. Build it.
 Delivering Insurance Solutions for
 Your Business.

USI Insurance Services LLC
 3 Executive Park Drive, Suite 300
 Bedford, NH 03110
 Toll Free: 855-USI-0123 | usi.com



Equipment | General Liability | Auto | Workers' Compensation
 Surety | Contract Review | Claims/Loss Control

Copyright ©2016 USI Insurance Services LLC. All Rights Reserved.

Advertiser Index

ABC Celebrates Its Members.....	37	Longchamps Electric Inc.....	6
ABC Chapter Ad	38	Martineau Electric, Inc.....	5
ABC Group Trust / USI.....	15	Meridian Construction Corp.....	22
ABC NH/VT Young Professionals Group	35	Metro Walls, Inc.....	4
ABC Premier Sponsors	32	Multi-Weld Services Inc.....	3
AIA-NH.....	39	Nathan Wechsler & Co.	16
Amari Company	23	NH Business Review.....	28
Bernstein Shur.....	19	North Branch Construction, Inc.....	26
Construx, Inc.	39	PacVan	27
Cross Insurance / Infantine Insurance	34	Page Street Leasing, LLC	40
Devine, Millimet & Branch PA	24	Peniel Environmental.....	39
Door Control, Inc.....	2	People Ready.....	29
Eckhardt & Johnson	17	Raynor Door Authority of New England.....	19
Envirovantage.....	back cover	RPF Environmental	25
Granite State Plumbing & Heating, LLC.....	31	Service Credit Union	18
Grappone Ford.....	19	Sign A Rama of Concord	36
Hampshire Fire Protection Co., Inc.....	inside front cover	S.L. Chasse Steel	33
Housewright Construction Inc.	6	The H.L. Turner Group	3
Jeremy Hiltz Excavating, Inc.	29	The Lawson Group.....	23
J. Lawrence Hall Co., Inc.	37	The Rowley Agency	30
		USI - New England	40
		Williams Scotsman	17



On-Site Storage Solutions
Prompt & Professional
Service To Your Job Site.



10' • 20' • 40'
Storage Containers



27'-53' Trailers
& 45'-48' Flatbeds



Ground-Level Offices
Now Available

Rent or Purchase • Short-Term & Long-Term
Serving NH • MA • ME • VT For Over 30 Years



603-622-1673

www.pagest.com



Start **Saving** Today

abc.org/discounts

Companies can take advantage of these great programs!



Provided by Fringe Benefit Group

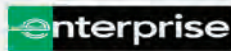
Setup fees are waived on this total benefits solution of ACA-compliant benefits and retirement plans.

AIA Contract Documents
THE INDUSTRY STANDARD

payroll4construction.com



Save up to 29 percent on shipping services.



FLEET MANAGEMENT

Reduce your vehicle fleet management costs and gain access to all incentives.



FORD FLEET



Premium pricing on professional development and leadership training courses.



Receive discounts and a free Executive Dashboard with a new construction accounting software purchase – a \$1,595 value.



Exclusive discounts on Autodesk products (e.g., AutoCAD, Revit, Civil 3D), and software on scheduling, document control, data management and laser scanning.



ExxonMobil Brands

Companies **and their employees** can take advantage of these great programs!



Save 20 percent on uniform rentals and purchases of work and safety apparel, logo'd apparel, boots and more.



Exclusive discounts on Ramada, Days Inn, Super 8, Baymont and other affordable brands.



FIAT CHRYSLER AUTOMOBILES

Members and their immediate family members receive discounts on most Chrysler, Dodge, Jeep®, RAM® and Fiat® vehicles.

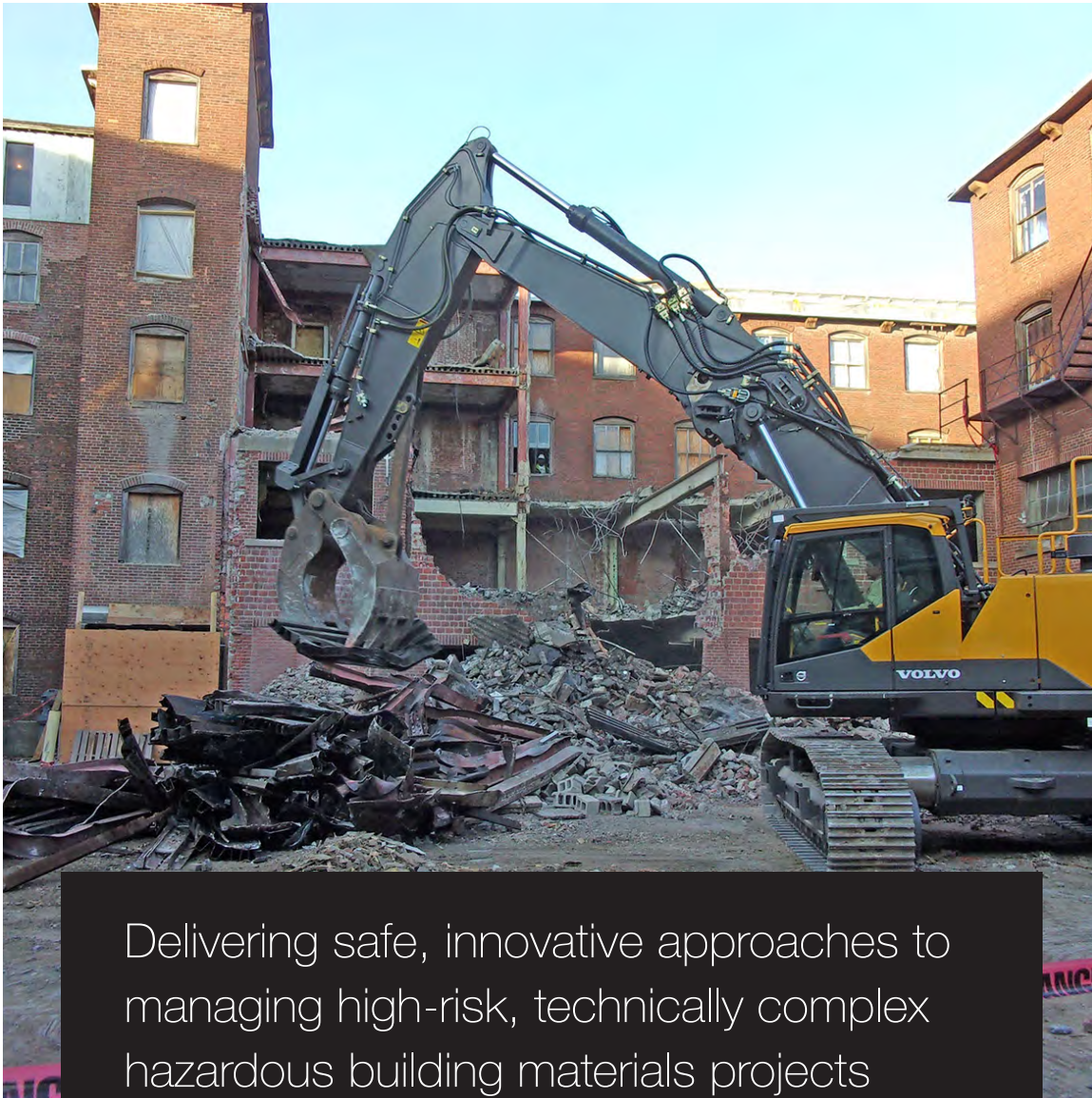


Contractors and building material suppliers are eligible for a 22 percent discount on calling plans, and savings on mobile devices.



For complete details visit abc.org/discounts





Delivering safe, innovative approaches to managing high-risk, technically complex hazardous building materials projects

The EnviroVantage role is to perform the initial environmental cleanup with attention to the overall considerations of the individual project. Having successfully completed thousands of Industrial and Federal projects, we believe in the "team" philosophy. EV understands that by partnering with Owners, Contractors and Consultants, it ensures the client receives the most efficient, cost effective and safest projects possible.

Licensed in seven Northeast states and owning our own fleet of equipment, EnviroVantage is a trusted authority in the verticals of Decontamination, Dismantling and Demolition.

RECOGNITION: 41 Industry & Safety Awards
SAFETY: .74EMR
BONDING: \$20M
INSURANCE: \$10M
TEAM: 100 Full-time Employees
2018 PROJECTS >\$500K: 22
TEAMING/JOINT VENTURE PARTNER: 8A, MBE, DBE



EnviroVantage[®]
ASBESTOS ABATEMENT. REMEDIATION. DEMOLITION. [.com](http://www.EnviroVantage.com)

800-640-5323
www.EnviroVantage.com